

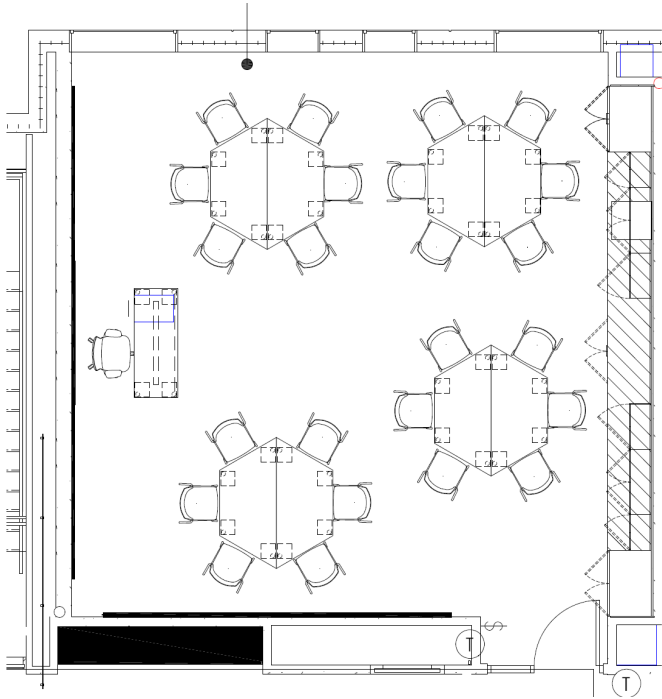
# JEWISH LEADERSHIP ACADEMY

*FURNITURE SCOPE*

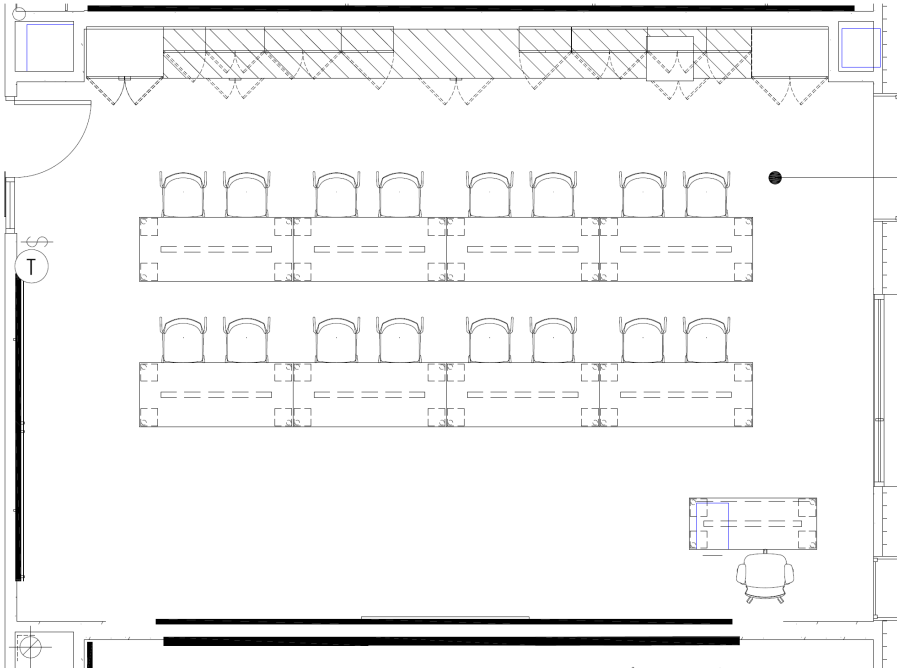
*HIGH SCHOOL*



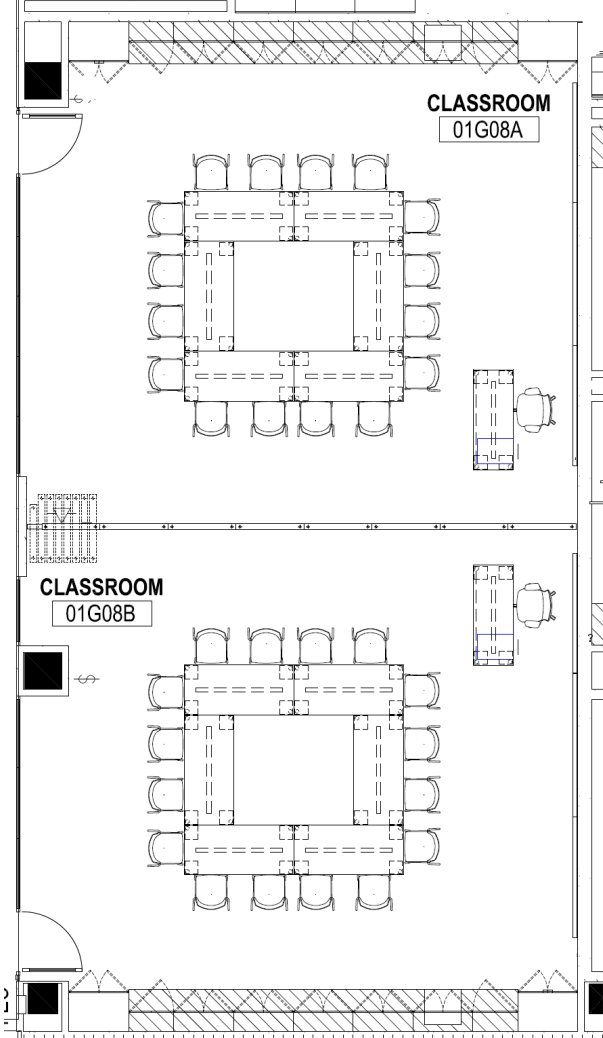
# HS CLASSROOMS



TYP. 1

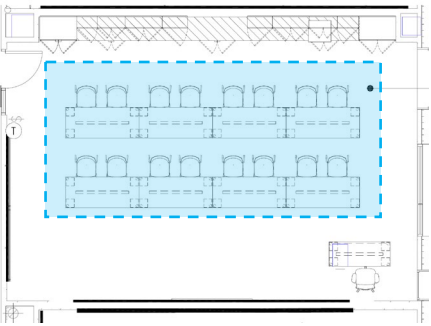
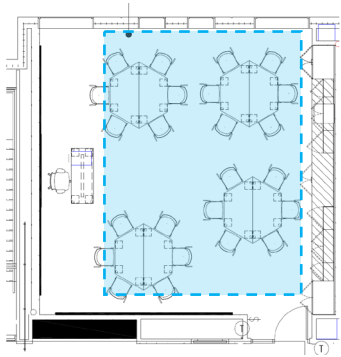


TYP. 2 – CLASSROOM 02G02



TYP. 3-SMALLER CLASSROOMS  
01G08A + 01G08B

# HS CLASSROOMS



**PILLAR TRAPEZOID TABLES ON CASTERS**  
**36X72**

**QTY: 72**

**FINISHES:**

TOP: FROSTY WHITE LAMINATE  
EDGE: PVC FROSTY WHITE  
BASE: BLACK



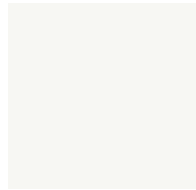
**PILLAR RECTANGULAR TABLES**  
**ON CASTERS**

**30X72**

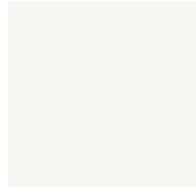
**QTY: 20**

**FINISHES:**

TOP: FROSTY WHITE  
LAMINATE  
EDGE: PVC FROSTY WHITE  
BASE: BLACK



FROSTY WHITE LAMINATE



FROSTY WHITE PVC EDGE



BASE: BLACK



POLY: OUTSIDE  
BLUEGREY INSIDE:  
COOLGREY



LEGS:  
BLUEGREY

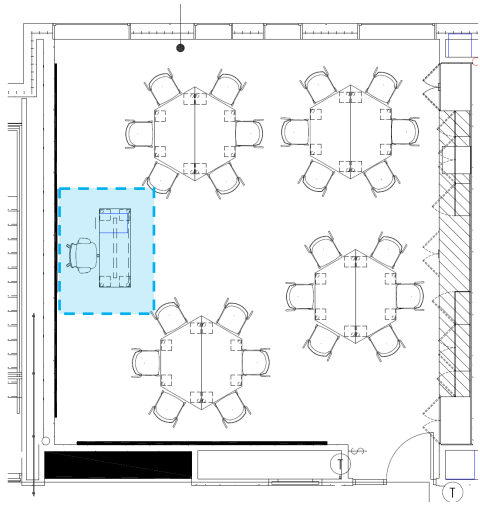
**DONI 4-LEG CHAIR**

**QTY. 264**

**FINISHES:**

POLY: BLUEGREY OUTSIDE, COOLGREY INSIDE  
FRAME: BLUEGREY

# CLASSROOMS



## OUSBY TASK CHAIR

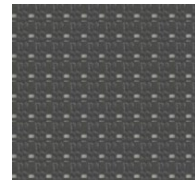
QTY. 12

### FINISHES:

MESH: GREY

COMPONENTS: BLACK

UPHOLSTERY: KNOLL: JOURNEY/JINGLE



MESH: GREY



POLY: BLACK



KNOLL JOURNEY/JINGLE



## PILLAR TABLE DESK ON CASTERS

### WITH FELT MODESTY

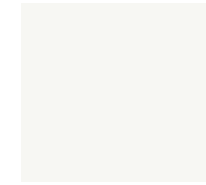
24" D x 60" W (QTY. 12)

### FINISHES:

TOP: FROSTY WHITE LAMINATE

EDGE: PVC FROSTY WHITE

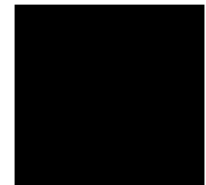
BASE: BLACK



FROSTY WHITE  
LAMINATE



FROSTY WHITE  
PVC EDGE



BASE: BLACK



FELT: FLANNEL



## CZ BOX/FILE MOBILE PED

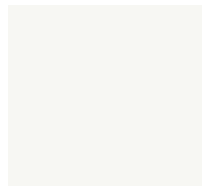
QTY: 12

### FINISHES:

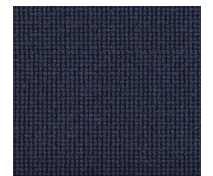
METAL: COTTONWOOD WHITE

UPHOLSTERY: PALLAS:

FRIEZE/HUDSON

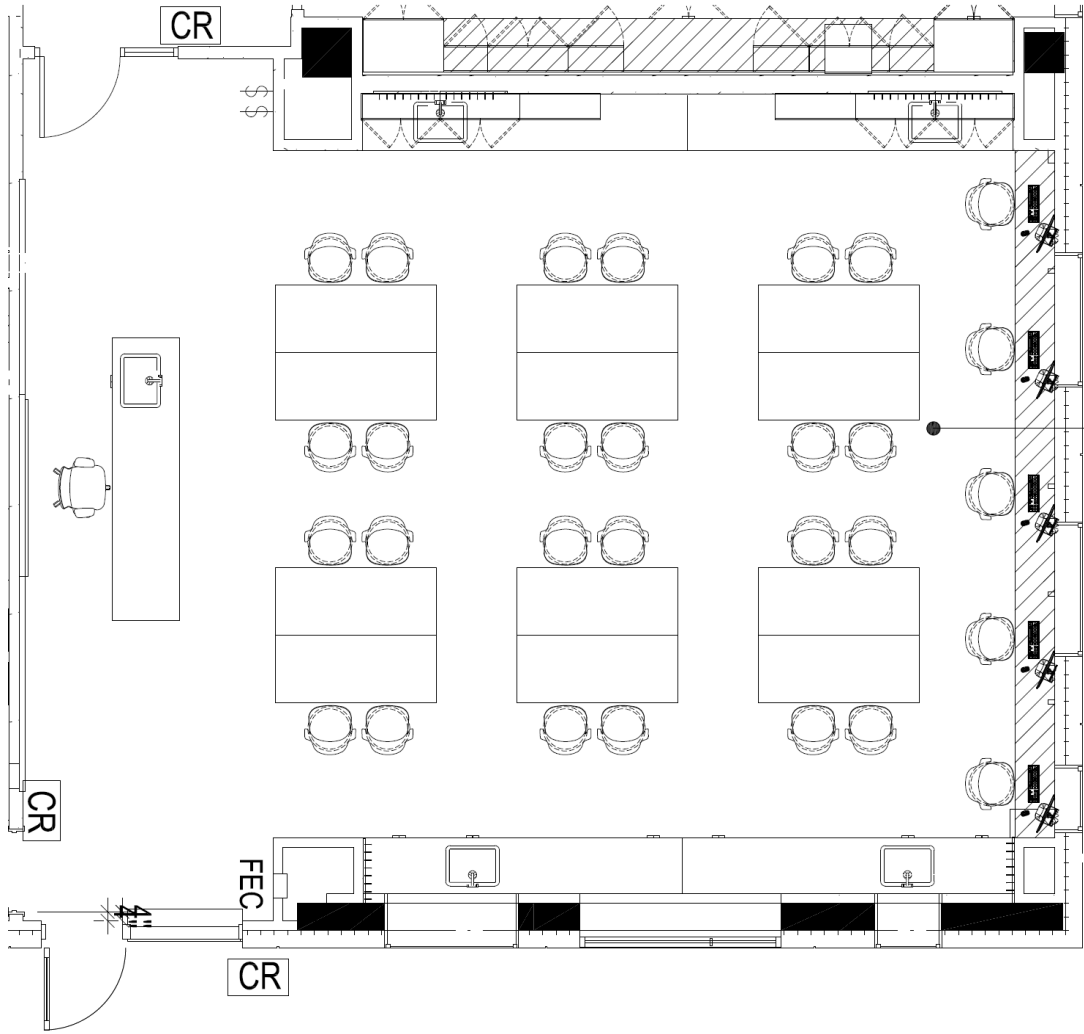


METAL:  
COTTONWOOD  
WHITE

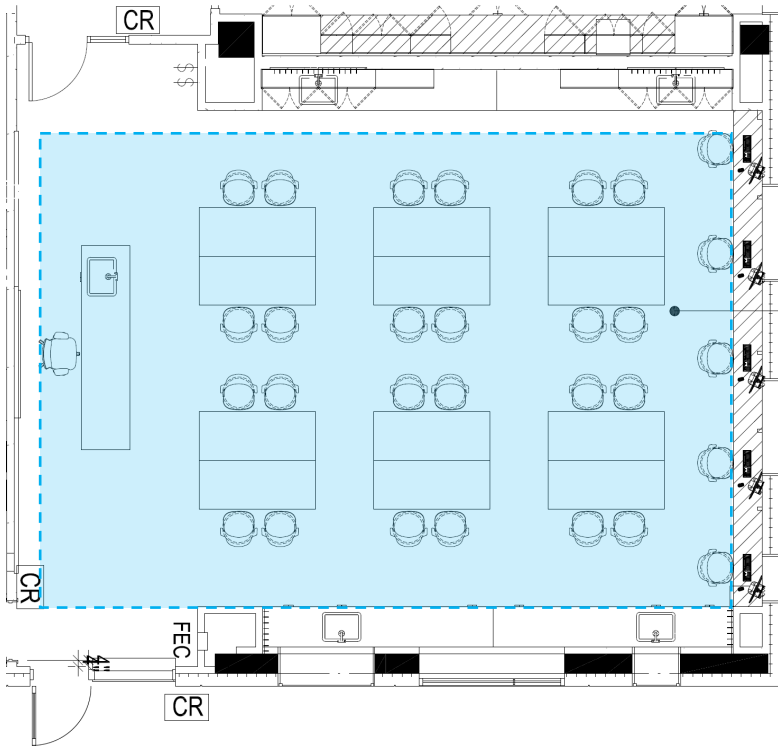


UPHOLSTERY: PALLAS:  
FRIEZE/HUDSON

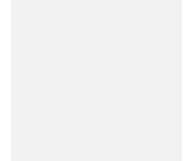
# HS LABS



# LABS



KEMRESIN BLACK



BASE: WHITE



## LAB TABLES:

(34 ) 36" D x 72" W ADJUSTABLE HEIGHT LAB TABLES, LOCKABLE CASTERS

## FINISHES:

TOP: KEMRESIN BLACK

BASE: METAL FRAME WHITE



## DONI TASK STOOL WITH ARMS

QTY. 93

(QTY: 24 – PHYSICS)

(QTY: 32 – BIO CHEM 1)

(QTY: 32 – BIO CHEM 2)

(QTY 5 – COUNTER IN PHYSICS)

## FINISHES:

POLY: BACK: BLACK, INNER: COTTONWOOD

BASE FRAME: BLACK



POLY: BLACK  
OUTSIDE/COTTONWOOD  
INSIDE



BASE FRAME: BLACK



## OUSBY TASK STOOL

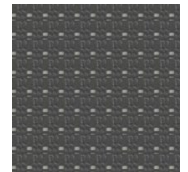
QTY. 3

## FINISHES:

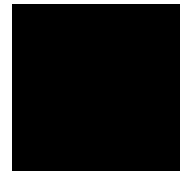
MESH: GREY

COMPONENTS: BLACK

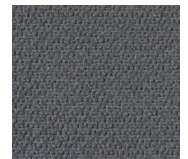
UPHOLSTERY: KNOLL: JOURNEY/CHIME



MESH: GREY

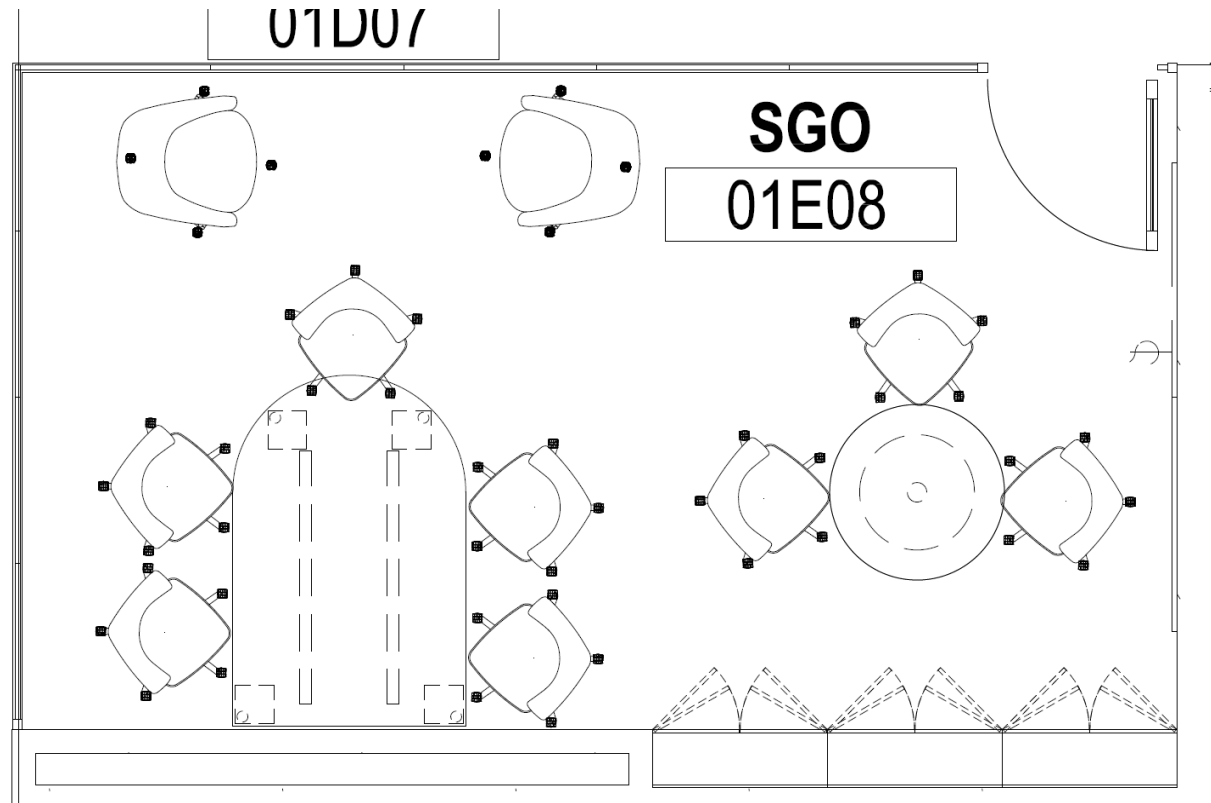


POLY: BLACK

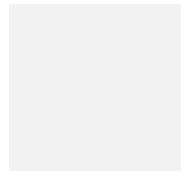


KNOLL:  
JOURNEY/CHIME

# HS SGO



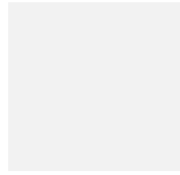
# HS SGO



LAMINATE:  
FROSTY WHITE



EDGE: BLACK



METAL BASE:  
COTTONWOOD WHITE

## ATHENS ROUND TABLE

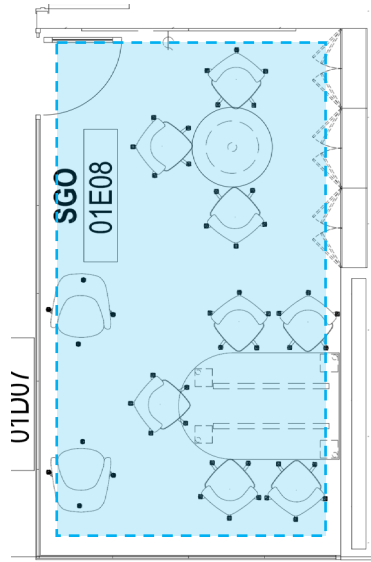
36" DIA (QTY. 1)

### FINISHES:

TOP: LAMINATE FROSTY WHITE

EDGE: BLACK

BASE: COTTONWOOD WHITE



POLY: OUTSIDE BLUEGREY  
INSIDE COOLGREY



BASE: BLACK



PALLAS: APHRODITE  
STORM CLOUD

## DONI TASK CHAIR WITH UPH. SEAT

QTY. 8

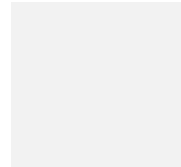
### FINISHES:

POLY: BLUEGREY/COOLGREY

BASE FRAME: BLACK

UPHOLSTERY: PALLAS:

APHRODITE/STORM CLOUD



LAMINATE:  
FROSTY WHITE



EDGE: BLACK



BASE: BLACK

## PILLAR D-SHAPED TABLE

42"D x 60"W

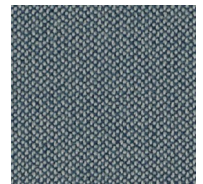
QTY. 1

### FINISHES:

TOP: LAMINATE FROSTY WHITE

EDGE: BLACK

BASE: BLACK



DESIGNTEX:  
ROCKET/CLOUD



BASE: ANTHRACITE

## ADLIB WORK/LOUNGE WITH TABLET

QTY: 2

### FINISHES:

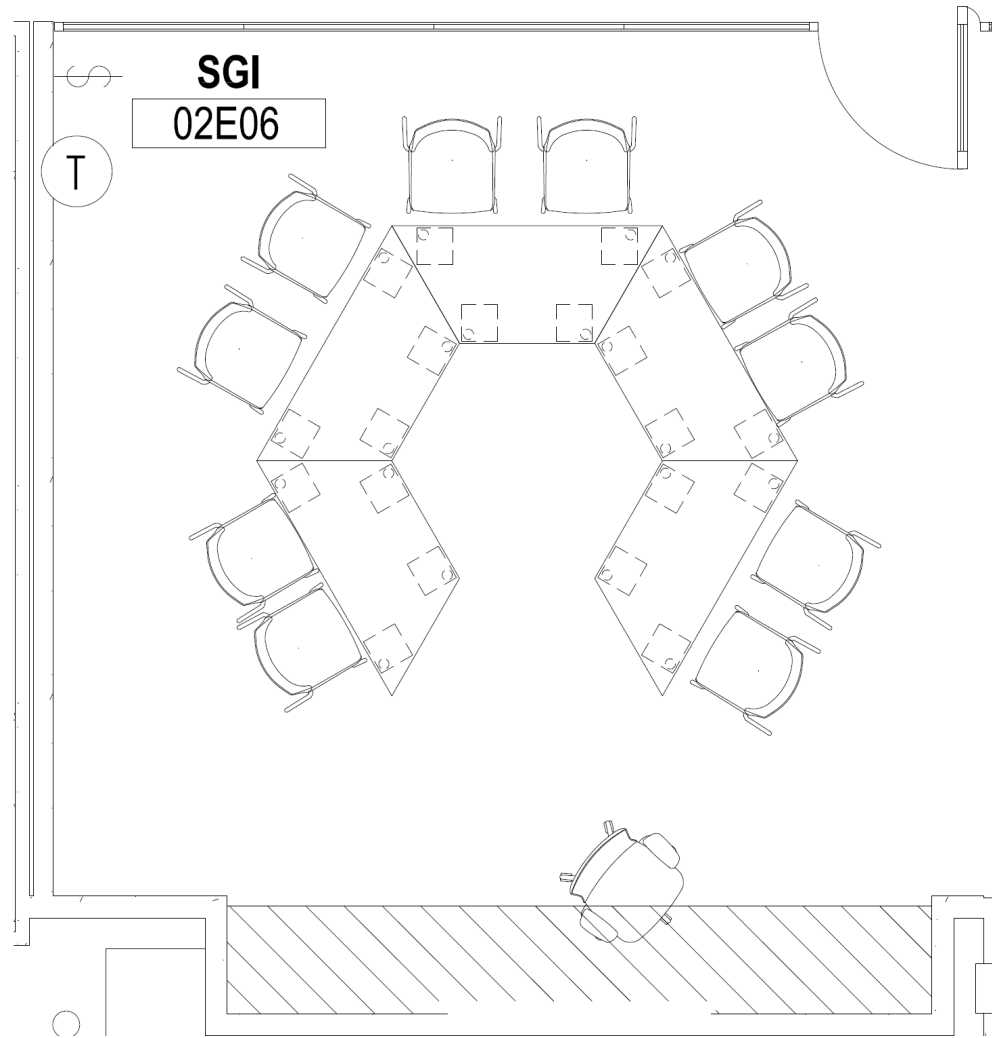
UPHOLSTERY: DESIGNTEX:  
ROCKET/CLOUD

BASE/FRAME: ANTHRACITE

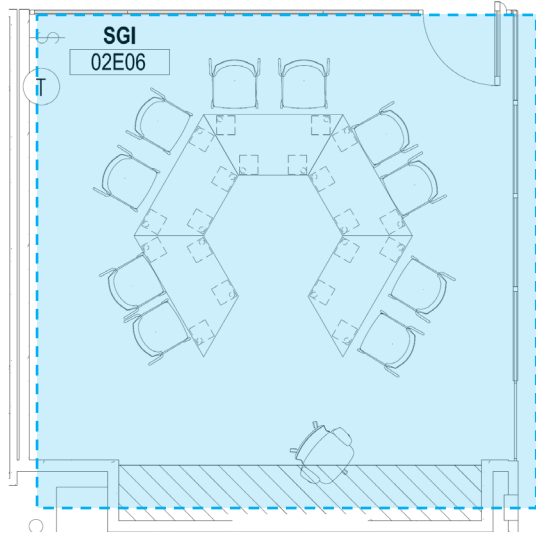
FOR ACCURACY OF COLOR/TEXTURE/FINISH PLEASE REFER TO PHYSICAL SAMPLES



# HS SGI



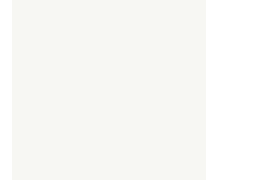
# HS SGI



**PILLAR TRAPEZOID TABLES ON CASTERS**  
**30X60**  
**QTY: 5**  
**FINISHES:**  
TOP: FROSTY WHITE LAMINATE  
EDGE: PVC FROSTY WHITE  
BASE: BLACK



FROSTY WHITE LAMINATE



FROSTY WHITE PVC EDGE



BASE: BLACK



**DONI 4-LEG CHAIR**

**QTY. 10**

**FINISHES:**

POLY: BLUEGREY OUTSIDE, COOLGREY INSIDE

FRAME: BLUEGREY



POLY: OUTSIDE  
BLUEGREY INSIDE:  
COOLGREY



LEGS:  
BLUEGREY



**OUSBY TASK CHAIR**

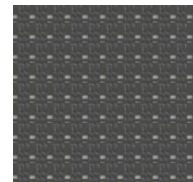
**QTY. 1**

**FINISHES:**

MESH: GREY

COMPONENTS: BLACK

UPHOLSTERY: KNOLL: JOURNEY/JINGLE



MESH: GREY

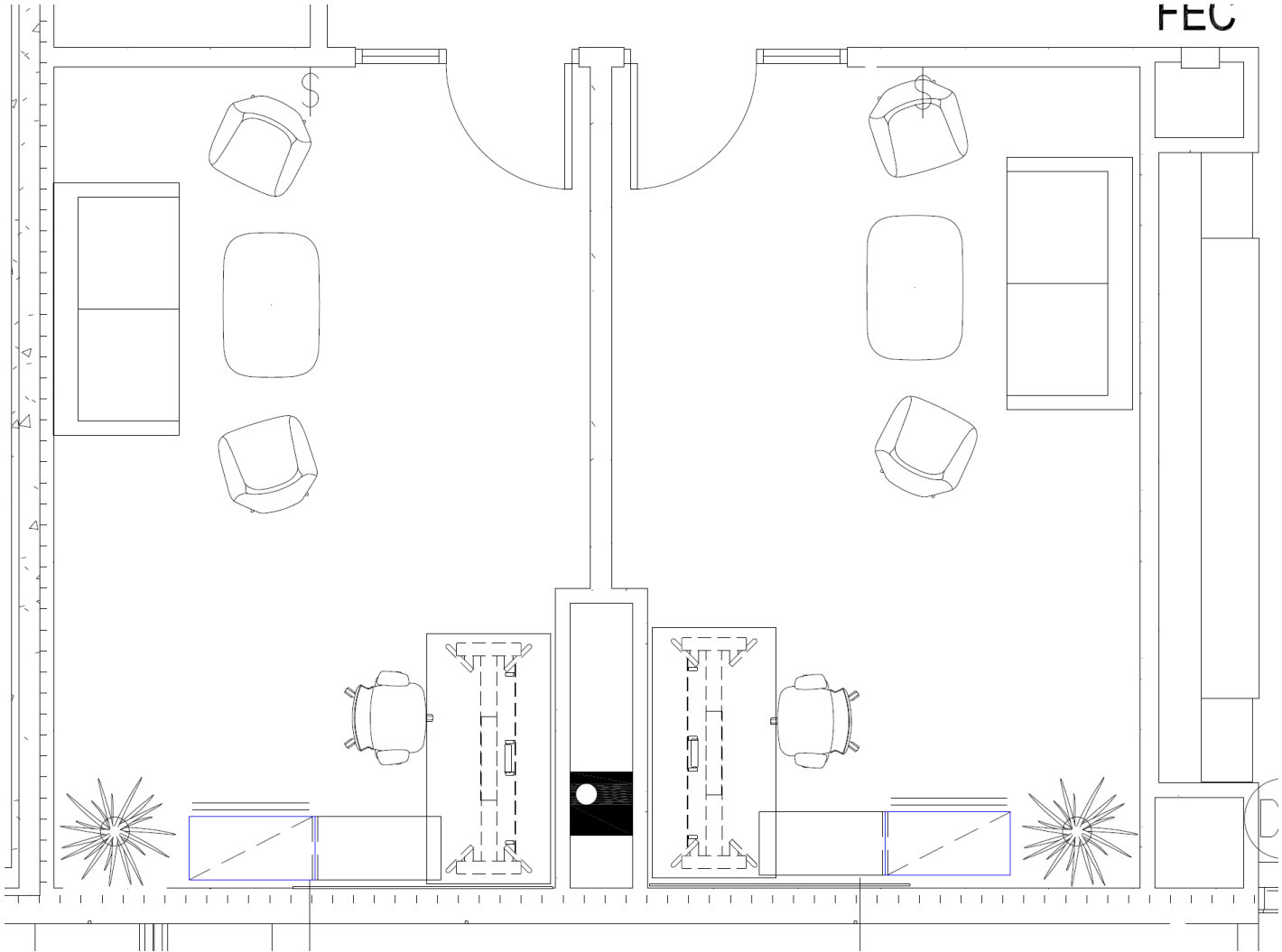


POLY: BLACK

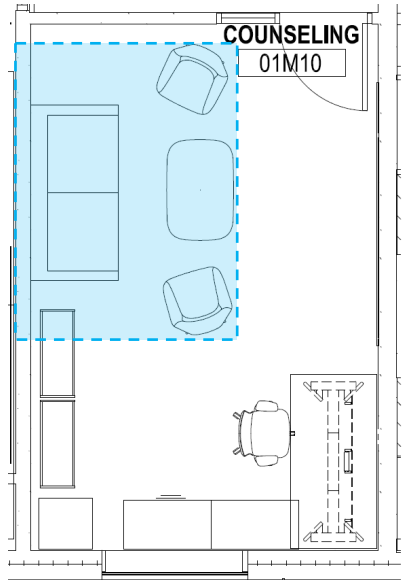


KNOLL JOURNEY/JINGLE

# HS COUNSELING



# HS COUNSELING (1&2)



**CONIC COFFEE TABLE**

12"H x 41"L x 28"W (QTY. 2)

FINISHES:

TOP: FUSION MAPLE

LAMINATE

EDGE: CLEAR

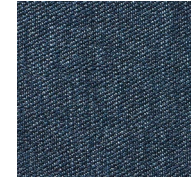
BASE: SLATE GREY



LAMINATE: FUSION  
MAPLE



BASE: SLATE GREY



INDIGO



BASE: BLACK



**ADAMS LOVE SEAT**

72"W (QTY. 2)

FINISHES:

UPHOLSTERY: INDIGO

BASE: BLACK



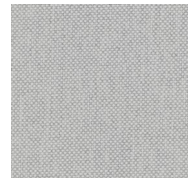
**FAMIGLIA LOUNGE CHAIR**

QTY: 4

FINISHES:

UPHOLSTERY: MAHARAM  
MODE/STROLL

BASE/FRAME: SLATE GREY



MAHARAM MODE STROLL



BASE: SLATE GREY



**OUSBY TASK CHAIR**

QTY. 2

FINISHES:

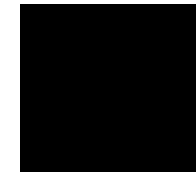
MESH: GREY

COMPONENTS: BLACK

UPHOLSTERY: KNOLL:  
JOURNEY/JINGLE



MESH: GREY



POLY: BLACK



KNOLL JOURNEY/JINGLE

FOR ACCURACY OF COLOR/TEXTURE/FINISH PLEASE REFER TO PHYSICAL SAMPLES

# HS COUNSELING (1&2)



## CZ DESK

30"D x 72"W

QTY. 2

### FINISHES:

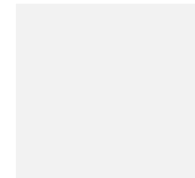
TOP: LAMINATE DESIGNER WHITE

EDGE: FROSTY WHITE

BASE: WOOD STAIN TBD

METAL FRAME UNDER SURFACE:  
COTTONWOOD WHITE

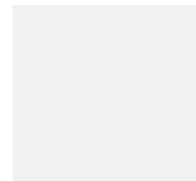
CENTER GROMMET



LAMINATE: DESIGNER WHITE



WOOD LEG STAIN: NATURAL ON BEECH



METAL FRAME:  
COTTONWOOD WHITE



## CANVAS LOW CREDENZA AND BOOKCASE

CREDENZA: 20"D X 72" W (OPEN AND CLOSED)

QTY. 2

BK CASE: 36"W X 72"H

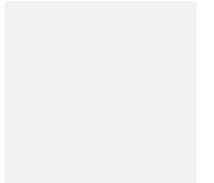
QTY.4

### FINISHES:

LAMINATE A: DESIGNER WHITE

LAMINATE B: SUGAR MAPLE

PULLS: ALUMINUM



LAMINATE A: DESIGNER WHITE

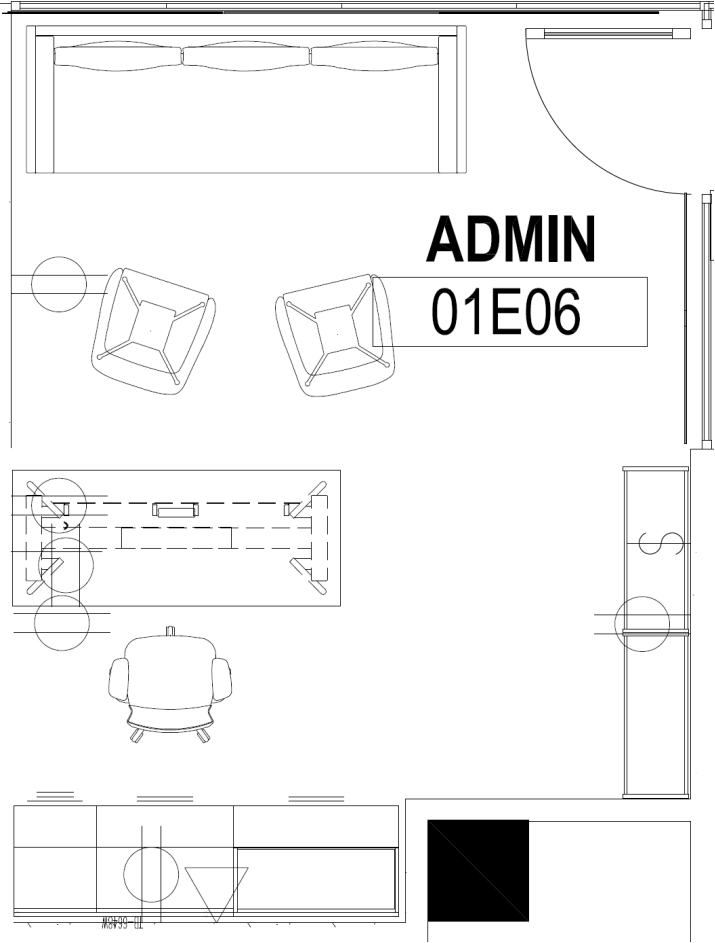


LAMINATE B: SUGAR MAPLE

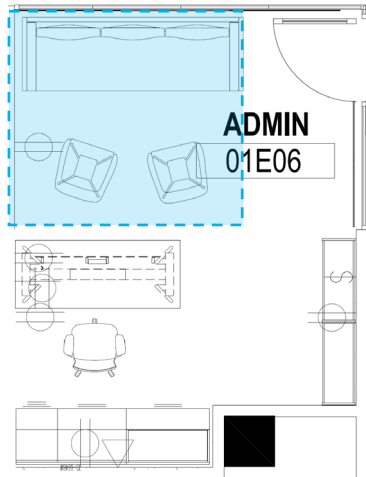
### FILE PULLS



# HS ADMIN



# HS ADMIN



**ADAMS SOFA**

72"W (QTY. 1)

FINISHES:

UPHOLSTERY: INDIGO

BASE: SILVER



INDIGO



BASE: SILVER



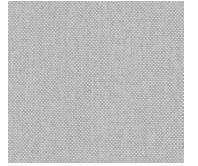
**CALIDA SWIVEL CHAIR**

QTY: 2

FINISHES:

UPHOLSTERY: MAHARAM  
MODE/STROLL

BASE/FRAME: POLISHED  
ALUMINUM



MAHARAM  
MODE/STROLL



METAL BASE:  
POLISHED ALUMINUM



**OUSBY TASK CHAIR**

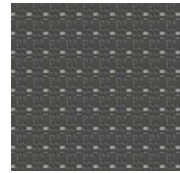
QTY. 1

FINISHES:

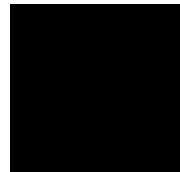
MESH: GREY

COMPONENTS: BLACK

UPHOLSTERY: KNOLL:  
JOURNEY/JINGLE



MESH: GREY

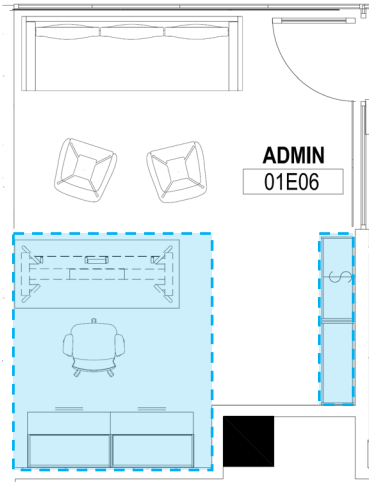


POLY: BLACK



KNOLL JOURNEY/JINGLE

# HS ADMIN



## CZ DESK

30"D x 72"W

### FINISHES:

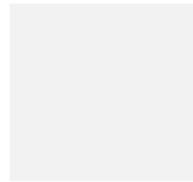
TOP: LAMINATE DESIGNER WHITE

EDGE: WHITE

BASE: NATURAL ON BEECH

METAL FRAME : COTTONWOOD WHITE

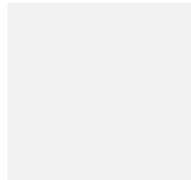
CENTER GROMMET



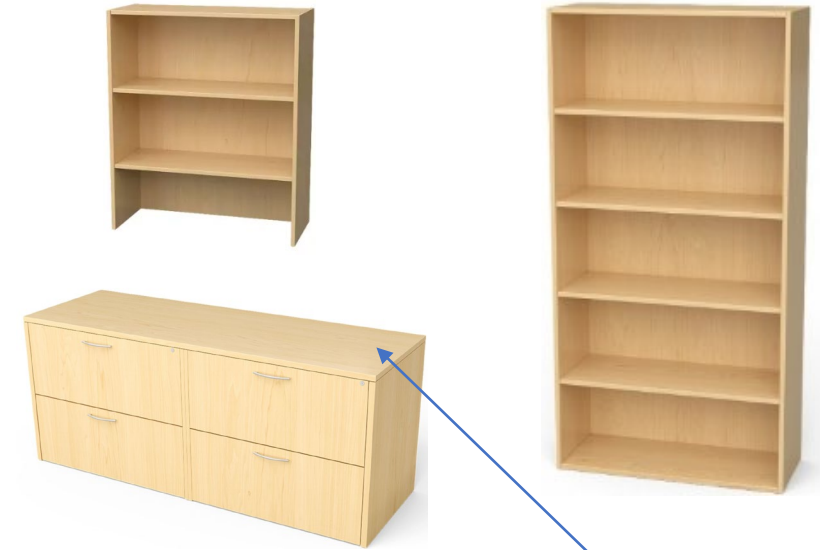
LAMINATE: DESIGNER WHITE



WOOD LEG STAIN: NATURAL ON BEECH



METAL FRAME:  
COTTONWOOD WHITE



## CANVAS CASEGOODS

### LATERAL /PED FILES

(2) STACK ON BOOKCASES – NO DOORS

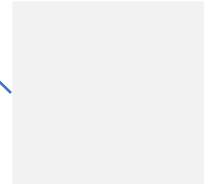
(2) FREESTANDING BOOKCASES

### FINISHES:

LAMINATE A: DESIGNER WHITE

LAMINATE B: SUGAR MAPLE

PULLS: ALUMINUM



LAMINATE A: DESIGNER WHITE



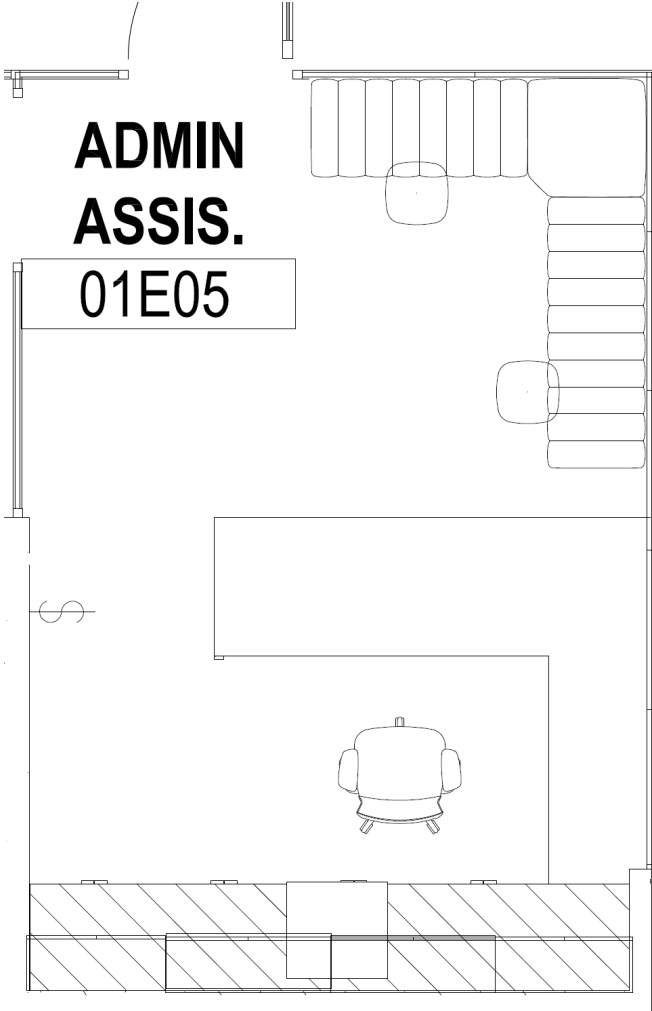
LAMINATE B: SUGAR MAPLE

### FILE PULLS

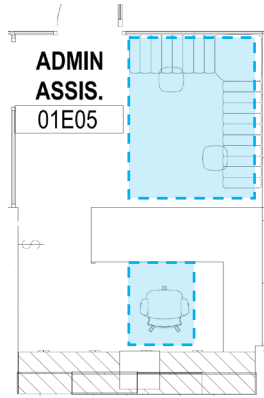




HS ADMIN ASSISTANT



# HS ADMIN ASSISTANT



## OUSBY TASK CHAIR

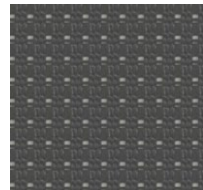
QTY. 1

### FINISHES:

MESH: GREY

COMPONENTS: BLACK

UPHOLSTERY: KNOLL JOURNEY/JINGLE



MESH: GREY



POLY: BLACK



KNOLL JOURNEY/JINGLE



## KICKSTART MODULAR UNIT (BACK AND NO BACK OPTIONS)

### FINISHES:

UPHOLSTERY: MOMENTUM

FAUX FELT/QUAIL

BASE: ALUMINUM



MOMENTUM

FAUX FELT: QUAIL



BASE: ALUMINUM



## HOST SIDE/LAPTOP TABLE

QTY: 2

### FINISHES:

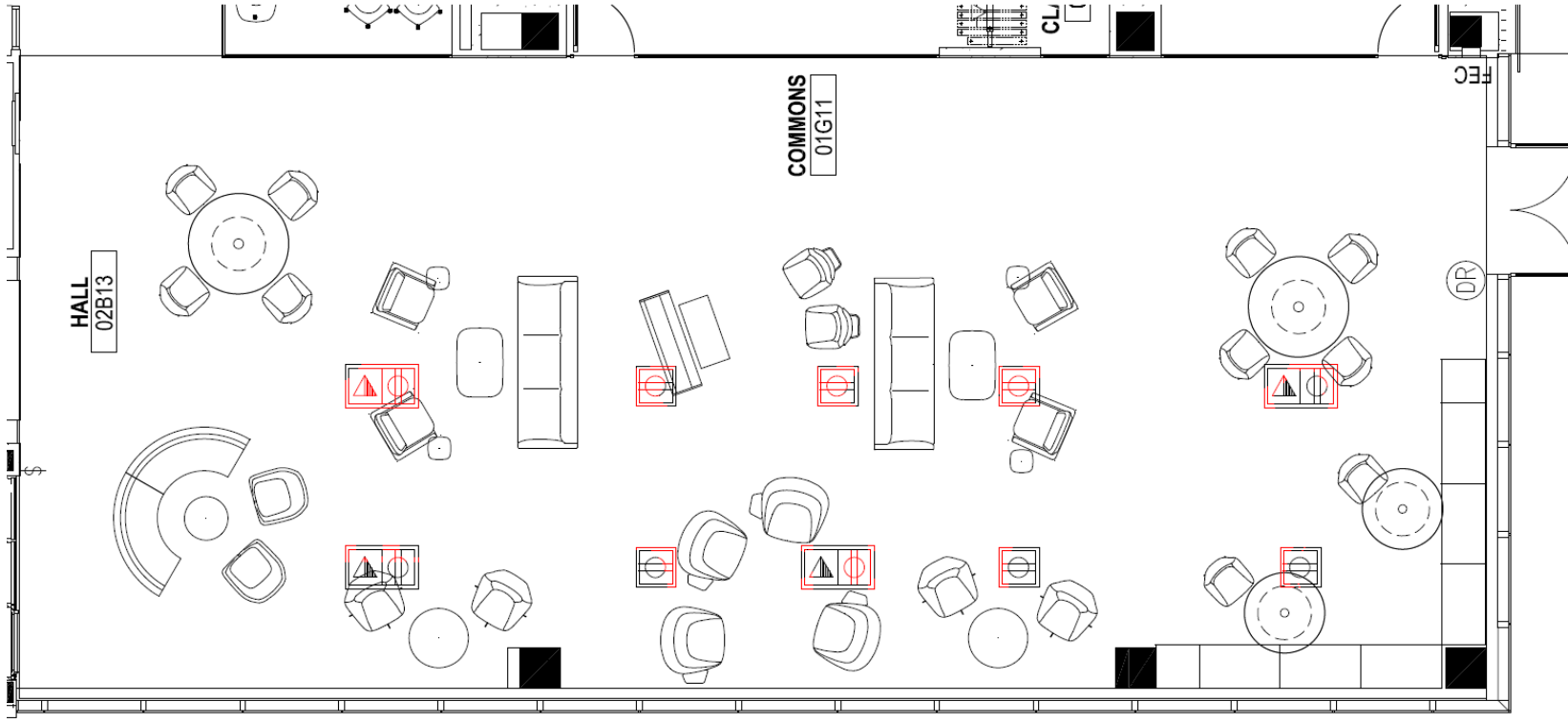
METAL: BLACK



METAL: BLACK

FOR ACCURACY OF COLOR/TEXTURE/FINISH PLEASE REFER TO PHYSICAL SAMPLES

# HS COMMONS-1

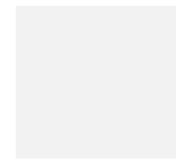


# HS COMMONS LEVEL 1



**ATHENS ROUND TABLE**  
48" DIA x 29"H (QTY. 2)  
60" DIA x 29"H (QTY. 2)

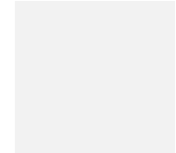
FINISHES:  
TOP: LAMINATE FROSTY WHITE  
EDGE: PVC BLACK  
BASE: COTTONWOOD WHITE



LAMINATE: FROSTY WHITE



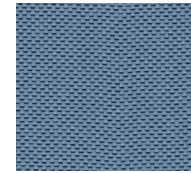
EDGE: BLACK



BASE: COTTONWOOD



**FAMIGLIA LOUNGE CHAIR**  
QTY: 6  
FINISHES:  
UPHOLSTERY: KNOLL:  
SYNTH/BLUENOTE  
BASE/FRAME: BLACK



KNOLL: SYNTH/BLUENOTE



METAL BASE: BLACK



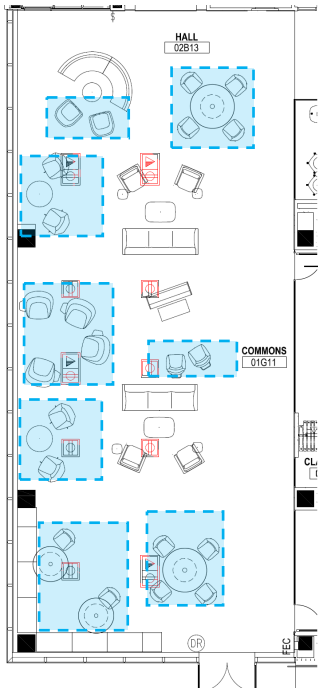
**OPEN LOUNGE CHAIR 4-STAR SWIVEL ON GLIDES**  
QTY: 2  
FINISHES:  
UPHOLSTERY:  
DESIGNTEX/ROCKET/NAVY  
BASE/FRAME: BLACK



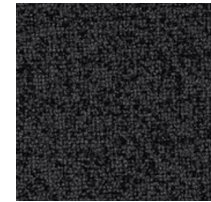
DESIGNTEX  
ROCKET/NAVY



BASE: BLACK



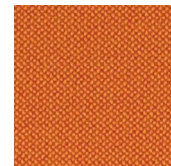
**MY PLACE MODULAR LOUNGE BENCHES**  
QTY:6  
FINISHES:  
UPHOLSTERY: PALLAS:  
ICON/SIMPLICITY



PALLAS: ICON/SIMPLICITY



**CONIC LOUNGE**  
QTY:4  
FINISHES:  
UPHOLSTERY: DESIGNTEX:  
ROCKET/CAROTENE  
BASE: BLACK



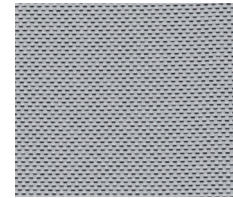
DESIGNTEX:  
ROCKET/CAROTENE



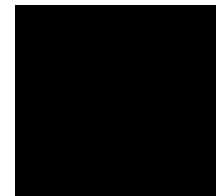
BASE: BLACK



**KIN TUB CHAIR 4STAR SWIVEL**  
QTY: 10  
FINISHES:  
UPHOLSTERY: TBD  
BASE: BLACK



KNOLL  
SYNTH/STROBE

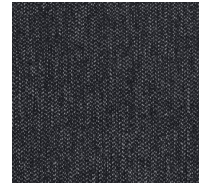


BASE: BLACK

# HS COMMONS LEVEL 1



**PEBBLE SOFA AND CHAIRS  
(ONLINE VENDOR)**  
(SOFA: QTY. 2)  
(CHAIRS: QTY. 4)  
**FINISHES:**  
UPHOLSTERY: SHADOW  
BASE: BLACK BRASS CAPPED



SHADOW

**Leg:** Brass Cap



## CONIC COFFEE TABLE

16"H x 41"L x 28"W (QTY. 2)

16"H x 32"L x 32"W (QTY 2)

**FINISHES:**

TOP: LAMINATE FUSION MAPLE

BASE: BLACK



LAMINATE: FUSION  
MAPLE



BASE: BLACK

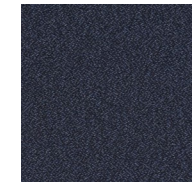


## MOTE MODULAR LOUNGE

**FINISHES:**

UPHOLSTERY: MAHARAM  
MILESTONE CHARCOAL

BASE: BLACK



MAHARAM:  
MILESTONE/CHARCOAL



BASE: BLACK



METAL: BLACK

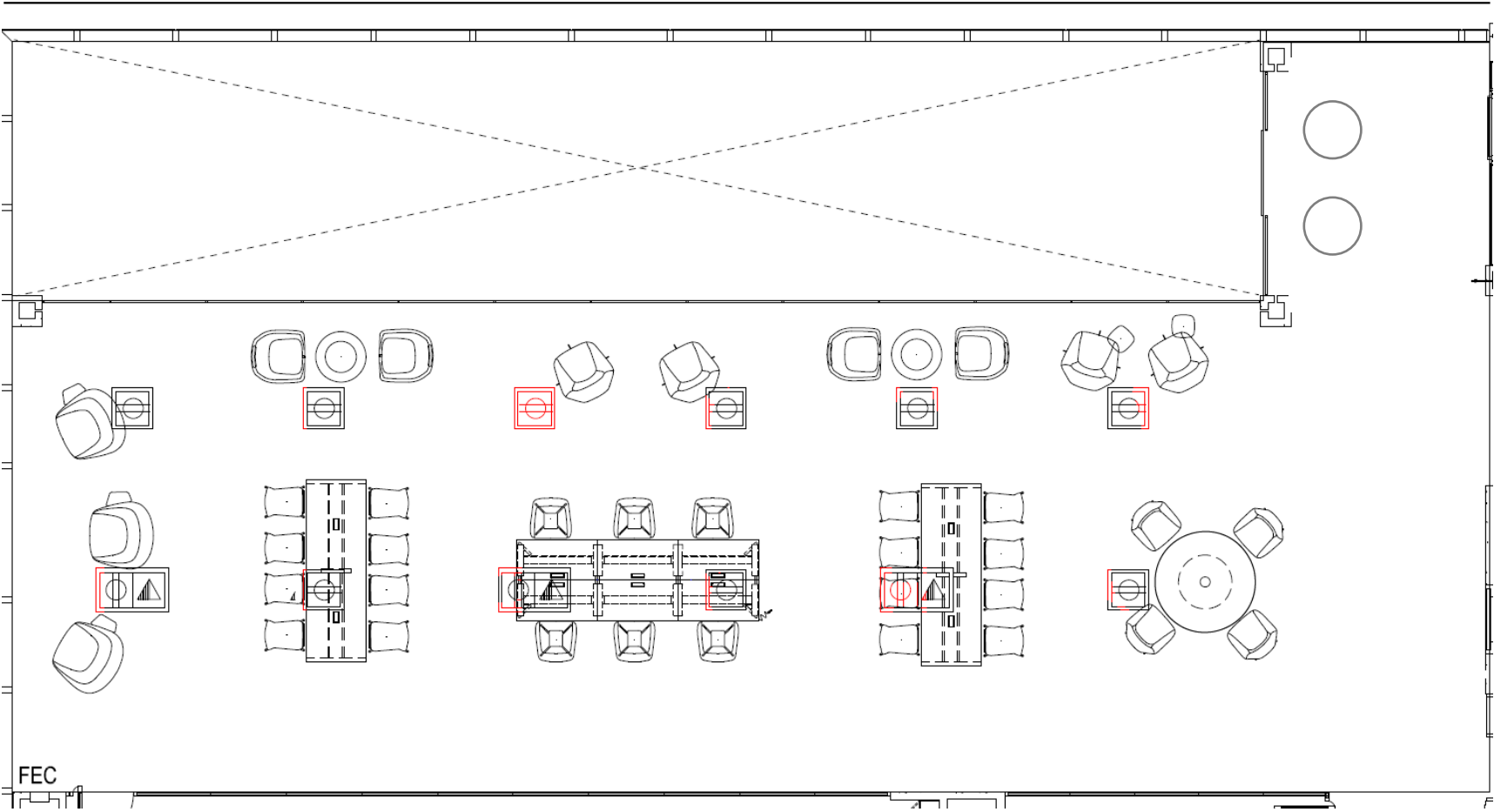
## HOST SIDE/LAPTOP TABLE

QTY: 4

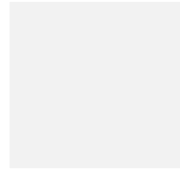
**FINISHES:**

METAL: BLACK

# HS COMMONS-2



# HS COMMONS LEVEL 2



LAMINATE A: WHITE



LAMINATE B:  
KENSINGTON MAPLE

**SERENADE GATHERING TABLE**  
36" Dx 108"W x42"H (QTY. 2)  
\*POWERED  
FINISHES:  
TOP: FROSTY WHITE  
BASE: KENSINGTON MAPLE

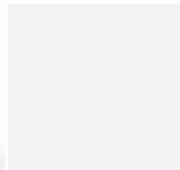
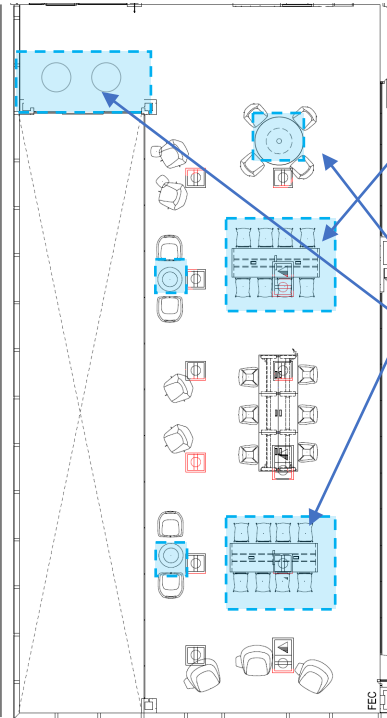


CAMIRA:  
BLAZER/ABERLOUR

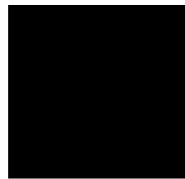
**KIN STOOL**  
(QTY: 16)  
FULLY UPHOLSTERED  
FINISHES:  
UPHOLSTERY: CAMIRA  
BLAZER/ABERLOUR  
FRAME: BLACK



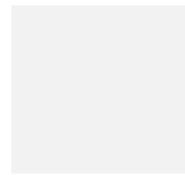
METAL BASE: BLACK



LAMINATE: FROSTY  
WHITE



EDGE: BLACK



BASE: COTTONWOOD

**ATHENS ROUND TABLE**  
36" DIA (QTY. 2)  
60" DIA (QTY. 1)  
24" DIA @ 18"H (QTY 2)  
FINISHES:  
TOP: FROSTY WHITE LAMINATE  
EDGE: PVC BLACK  
BASE: COTTONWOOD WHITE

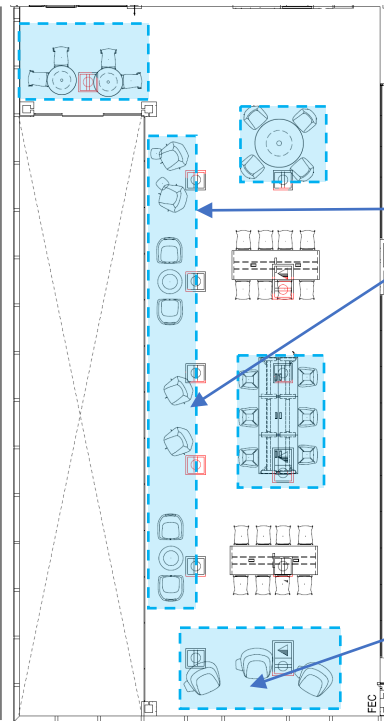


METAL BLACK

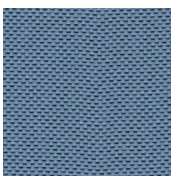
**HOST SIDE/LAPTOP TABLE**  
QTY: 4  
FINISHES:  
UPHOLSTERY: TBD



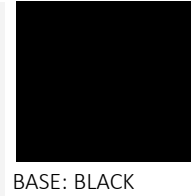
**HS  
COMMONS LEVEL 2**



DESIGNTEX  
ROCKET/NAVY  
(X4)

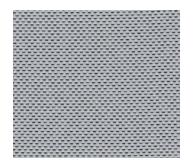


KNOLL:  
SYNTH/BLUENOTE  
(X3)



BASE: BLACK

**FAMIGLIA LOUNGE CHAIR**  
QTY: 7  
FINISHES:  
UPHOLSTERY: DESIGNTEX  
ROCKET/NAVY  
BASE/FRAME: BLACK



KNOLL  
SYNTH/STROBE

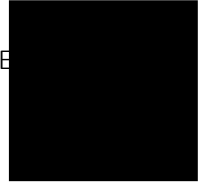


BASE: BLACK

**KIN TUB CHAIR WITH CASTERS**  
QTY: 10  
(BENCHING AREA)  
FINISHES:  
UPHOLSTERY: TBD  
BASE/FRAME: BLACK



LAMINATE: FUSION  
MAPLE



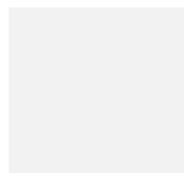
BASE: BLACK

**CONIC COFFEE TABLE**  
16"H x 32"L x 32"W (QTY 2)  
FINISHES:  
TOP: LAMINATE FUSION MAPLE  
BASE: BLACK

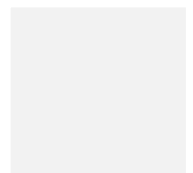


**CZ BENCHING**  
KNIFE EDGE \*POWERED  
24"D x 72"W (3 CONNECTED)

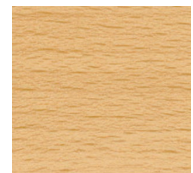
FINISHES:  
TOP: LAMINATE FROSTY  
WHITE  
EDGE: FROSTY WHITE  
BASE: NATURAL ON BEECH  
METAL FRAME :  
COTTONWOOD WHITE



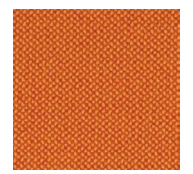
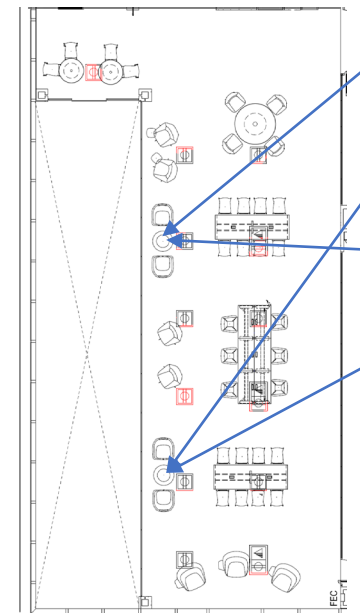
METAL FRAME:  
COTTONWOOD



LAMINATE: FROSTY  
WHITE



WOOD LEG STAIN: NATURAL  
ON BEECH



DESIGNTEX:  
ROCKET/CAROTENE



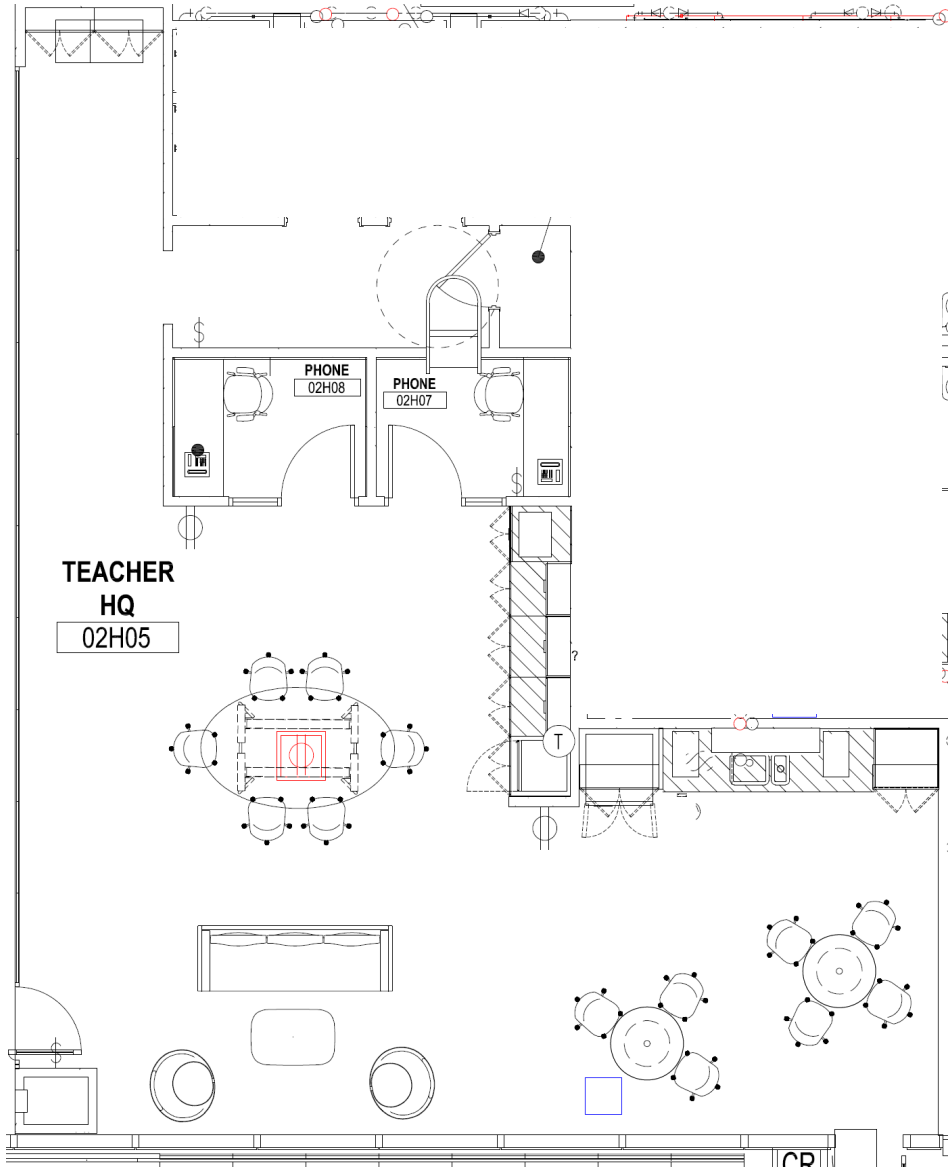
BASE: BLACK

**CONIC LOUNGE**  
QTY:4  
FINISHES:  
UPHOLSTERY: TBD

FOR ACCURACY OF COLOR/TEXTURE/FINISH PLEASE REFER TO PHYSICAL SAMPLES



# HS TEACHER HQ & PHONE ROOMS



# HS TEACHER HQ & PHONE ROOMS



**CZ ELLIPTICAL MEETING TABLE**  
**KNIFE EDGE \*NO POWER**  
 60"D x 96"W  
**FINISHES:**  
 TOP: LAMINATE FROSTY WHITE  
 EDGE: WHITE  
 BASE: NATURAL ON BEECH  
 METAL FRAME: COTTONWOOD WHITE

LAMINATE: WHITE

EDGE: WHITE

WOOD LEG STAIN:  
 NATURAL ON BEECH

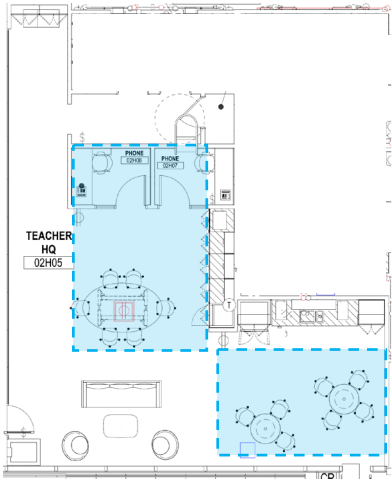


**ATHENS ROUND TABLE**  
 36" DIA (QTY. 2)  
 30" DIA (QTY. 2)  
**FINISHES:**  
 TOP: LAMINATE FROSTY WHITE  
 EDGE: BLACK PVC  
 BASE: COTTONWOOD WHITE

LAMINATE: FROSTY  
 WHITE

EDGE: BLACK

METAL BASE:  
 COTTONWOOD  
 WHITE



**TURO TABLE DESK (PHONE ROOMS)**  
 30"D x 60"W (QTY. 2)  
**FINISHES:**  
 TOP: WHITE  
 EDGE: PLYWOOD CORE  
 BASE: BLACK

LAMINATE: WHITE

BASE: BLACK

EDGE: PLYWOOD  
 CORE



**KIN SIDE CHAIR**  
**FULLY UPHOLSTERED**  
**5-STAR SWIVEL ON CASTERS**  
 QTY: 15  
**FINISHES:**  
 UPHOLSTERY: MOMENTUM:  
 FAUX FELT/BARK  
 BASE/FRAME: BLACK

MOMENTUM:  
 FAUX FELT/BARK

BASE METAL: BLACK

FOR ACCURACY OF COLOR/TEXTURE/FINISH PLEASE REFER TO PHYSICAL SAMPLES

# HS TEACHER HQ



LAMINATE: FUSION  
MAPLE



BASE: BLACK

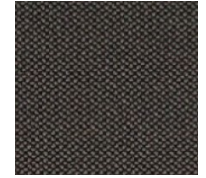
## CONIC COFFEE TABLE

12"H x 41"L x 28"W (QTY. 1)

### FINISHES:

TOP: LAMINATE FUSION  
MAPLE

BASE: BLACK



MOMEMENTUM  
TRADITION/C-ZERO SLY



BASE: BLACK

## CONIC LOUNGE CHAIR W/ INTEGRAL HEADREST

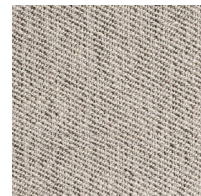
### WIREFRAME BASE

QTY: 2

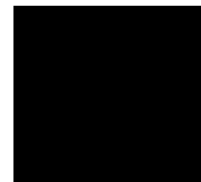
### FINISHES:

UPHOLSTERY: MOMEMENTUM  
TRADITION/C-ZERO SLY

BASE/FRAME: BLACK



PEARL BEIGE



BASE: BLACK

## ADAMS SOFA

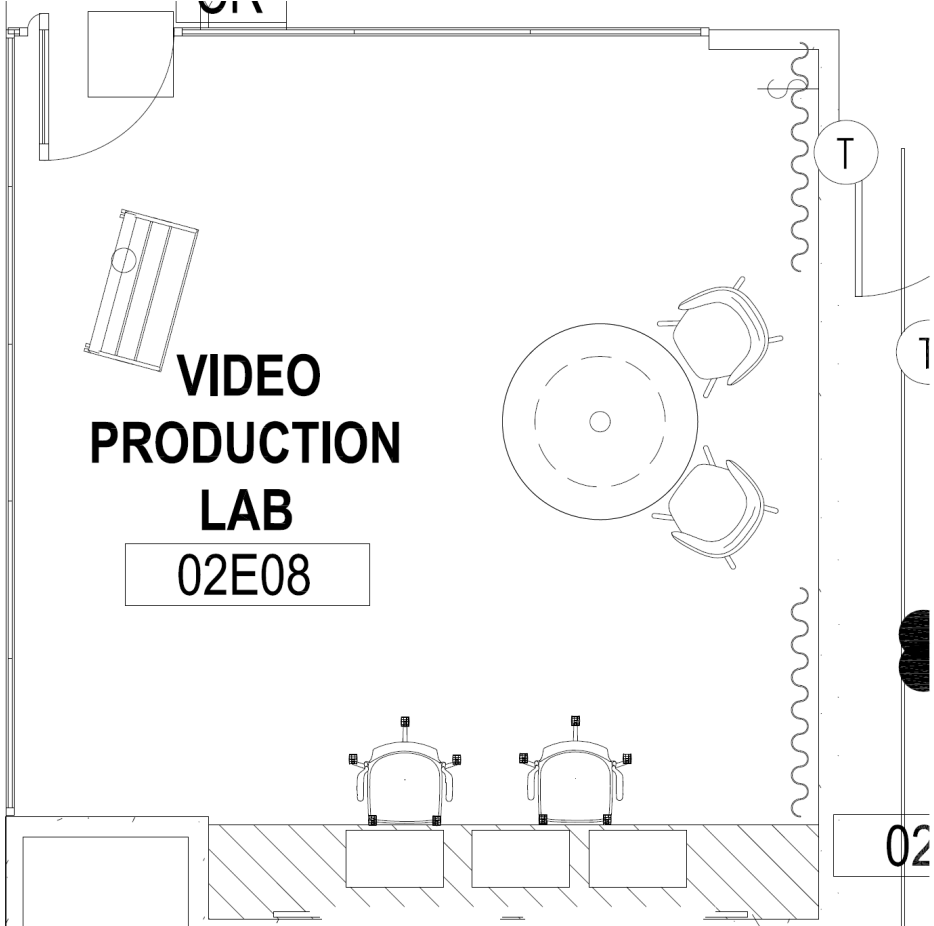
84"W (QTY. 1)

### FINISHES:

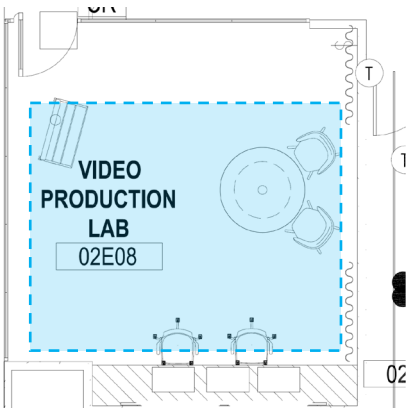
UPHOLSTERY: PEARL BEIGE

BASE: BLACK

# HS VIDEO PRODUCTION

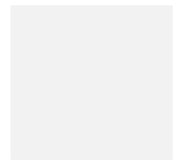


# HS VIDEO PRODUCTION



**ATHENS ROUND TABLE**  
48" DIA, CAFÉ HT. (QTY. 1)

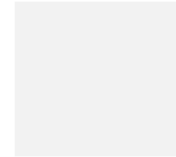
**FINISHES:**  
TOP: LAMINATE FROSTY WHITE  
EDGE: PVC BLACK  
BASE: COTTONWOOD WHITE



LAMINATE: FROSTY WHITE



EDGE: BLACK



METAL BASE:  
COTTONWOOD WHITE



**DONI TASK CHAIR WITH UPH. SEAT**

QTY. 2

**FINISHES:**

POLY: BLUEGRE/COOLGREY  
BASE FRAME: BLACK  
UPHOLSTERY: PALLAS:  
APHRODITE/STORM CLOUD



POLY: OUTSIDE BLUEGREY  
INSIDE COOLGREY



BASE: BLACK



APHRODITE/STORM CLOUD



**BASTILLE STOOL FULLY UPHOLSTERED**

QTY: 2

**FINISHES:**

UPHOLSTERY: KNOLL JOURNEY/JINGLE  
BASE/FRAME: (BLACK)



KNOLL JOURNEY/JINGLE



BASE METAL:BLACK

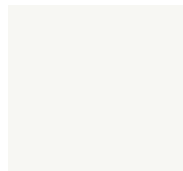


**PILLAR TABLE DESK ON CASTERS WITH FELT MODESTY**

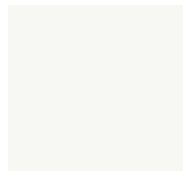
24"D x 60"W (QTY. 1)

**FINISHES:**

TOP: FROSTY WHITE LAMINATE  
EDGE: PVC FROSTY WHITE  
BASE: BLACK



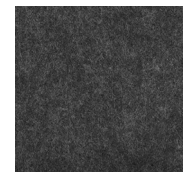
FROSTY WHITE LAMINATE



FROSTY WHITE PVC EDGE



BASE: BLACK



FELT: FLANNEL

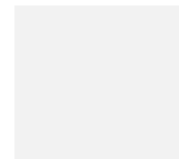


**CZ BOX/FILE MOBILE PED**

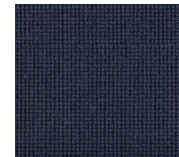
QTY: 1

**FINISHES:**

METAL: COTTONWOOD WHITE  
UPHOLSTERY: FRIEZE/HUDSON



METAL: COTTONWOOD WHITE



UPHOLSTERY: PALLAS FRIEZE/HUDSON



**OUSBY TASK CHAIR**

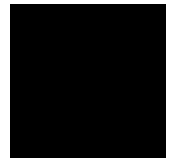
QTY. 1

**FINISHES:**

MESH: GREY  
COMPONENTS: BLACK  
UPHOLSTERY: KNOLL: JOURNEY/JINGLE



MESH: GREY

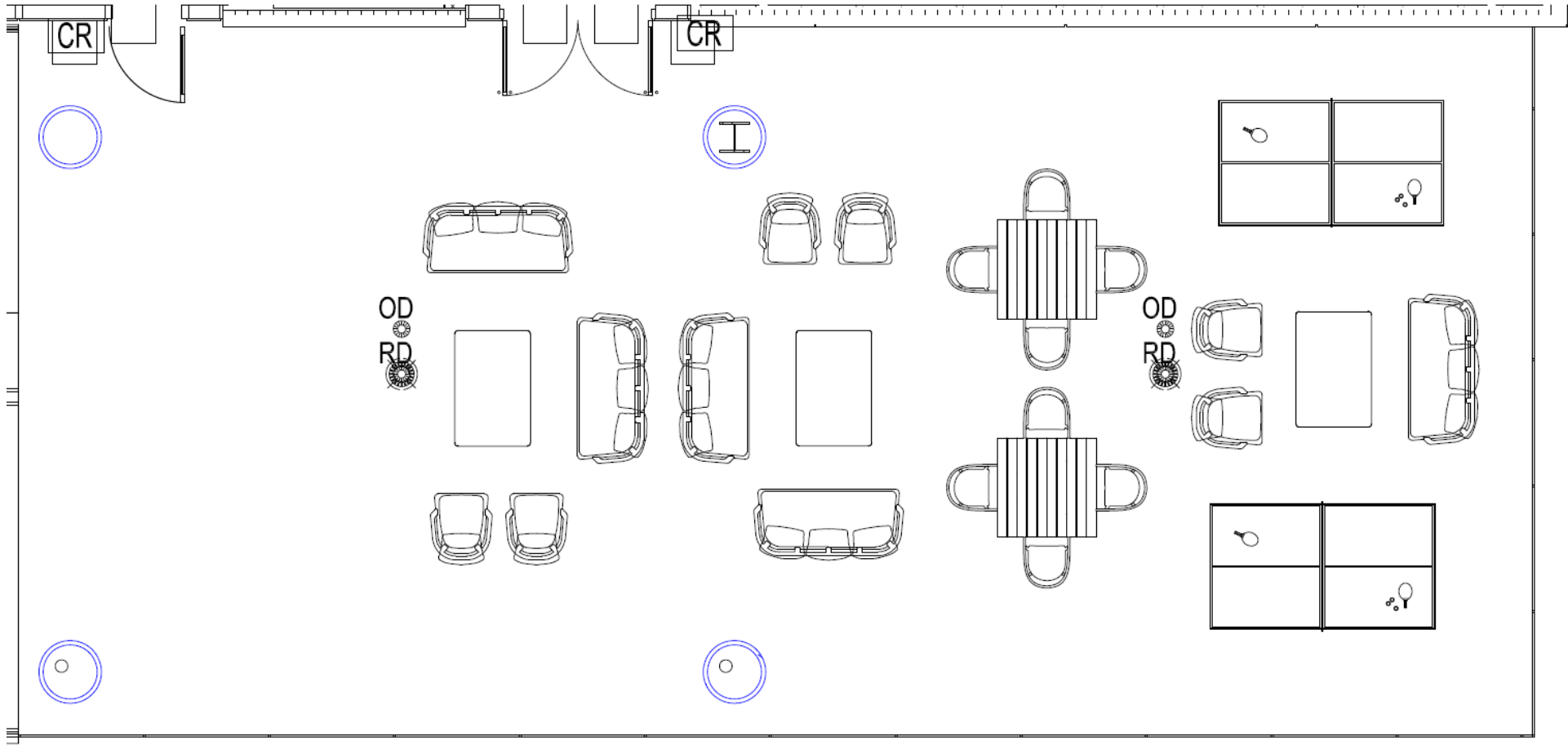


POLY: BLACK



KNOLL JOURNEY/JINGLE

# OUTDOOR TERRACE



# OUTSIDE DINING & OUTDOOR TERRACE



## CLASSIC ALUMINUM DINING TABLE

35.5"D x 35.5"W x 29.5"H

QTY: 2 ON TERRACE

QTY: 6 OUTSIDE DINING

**TOTAL: QTY. 8**

COLOR: SLATE

<https://www.patioproducts.com/classic-aluminum-4-seat-square-dining-table-slate-csal-sl-4sqdt-by-harmonia-living.html>



## CLASSIC DINING ARM CHAIRS

QTY: 8 ON TERRACE

QTY: 12 OUTSIDE DINING

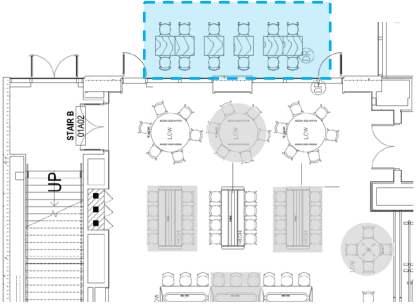
**TOTAL: QTY. 20**

COLOR: SLATE, NO CUSHION

<https://www.patioproducts.com/pacific-dining-arm-chair-slate-hl-pac-sl-dac-by-harmonia-living.html>



**FABRIC: SUNBRELLA CANVAS  
GRANITE**



## AVION CLUB CHAIR

**QTY: 6**

OVERALL: 30.75"W x 32"D x 33"H

FRAME: SLATE

UPHOLSTERY: SUNBRELLA CANVAS/GRANITE

<https://www.patioproducts.com/avion-club-chair-hl-avn-sl-cc-hb.html>



## AVION LOVE SEAT

**QTY: 5**

OVERALL: 57.5"W x 32"D x 33"H

FRAME: SLATE

UPHOLSTERY: SUNBRELLA CANVAS/GRANITE

<https://www.patioproducts.com/avion-loveseat-hl-avn-sl-ls.html>



## AVION ROUND COFFEE TABLE

**QTY: 3**

DIMENSIONS: 33.75"W x 33.75"D x 15.75"H

COLOR: SLATE

<https://www.patioproducts.com/avion-round-coffee-table-black-frame-hl-avn-bk-rct.html>

