

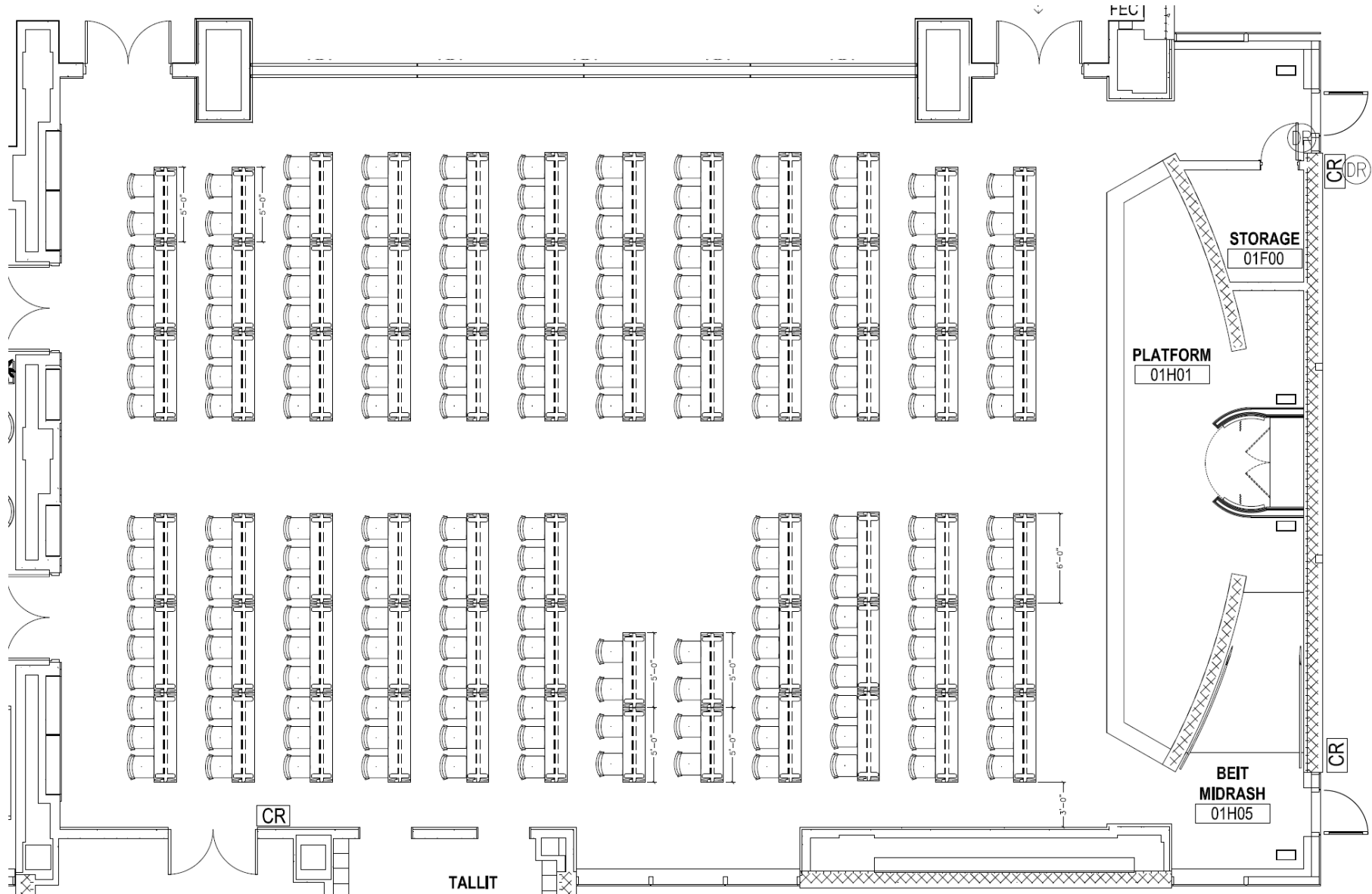
JEWISH LEADERSHIP ACADEMY

FURNITURE SCOPE

HUB BUILDING



BEIT MIDRASH



BEIT MIDRASH



PIROUETTE FLIP NESTING TABLES ON CASTERS

18"D x 72"W (QTY. 62)

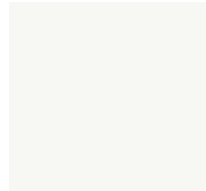
18"D x 60"W (QTY.8)

FINISHES:

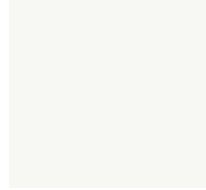
TOP: FROSTY WHITE LAMINATE

EDGE: PVC FROSTY WHITE

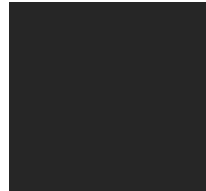
BASE: BLACK PAINTED METAL



FROSTY WHITE LAMINATE



FROSTY WHITE PVC EDGE



BASE: BLACK



OPT 4 MESH BACK STACK CHAIR, UPH. SEAT

QTY. 420

FINISHES:

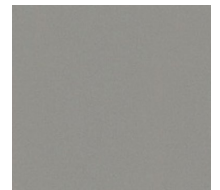
POLY/MESH: STONE GREY

FRAME: STARLIGHT SILVER METALLIC

UPHOLSTERY: PALLAS FRIEZE HUBERT



STONE GREY
POLY/MESH BACK

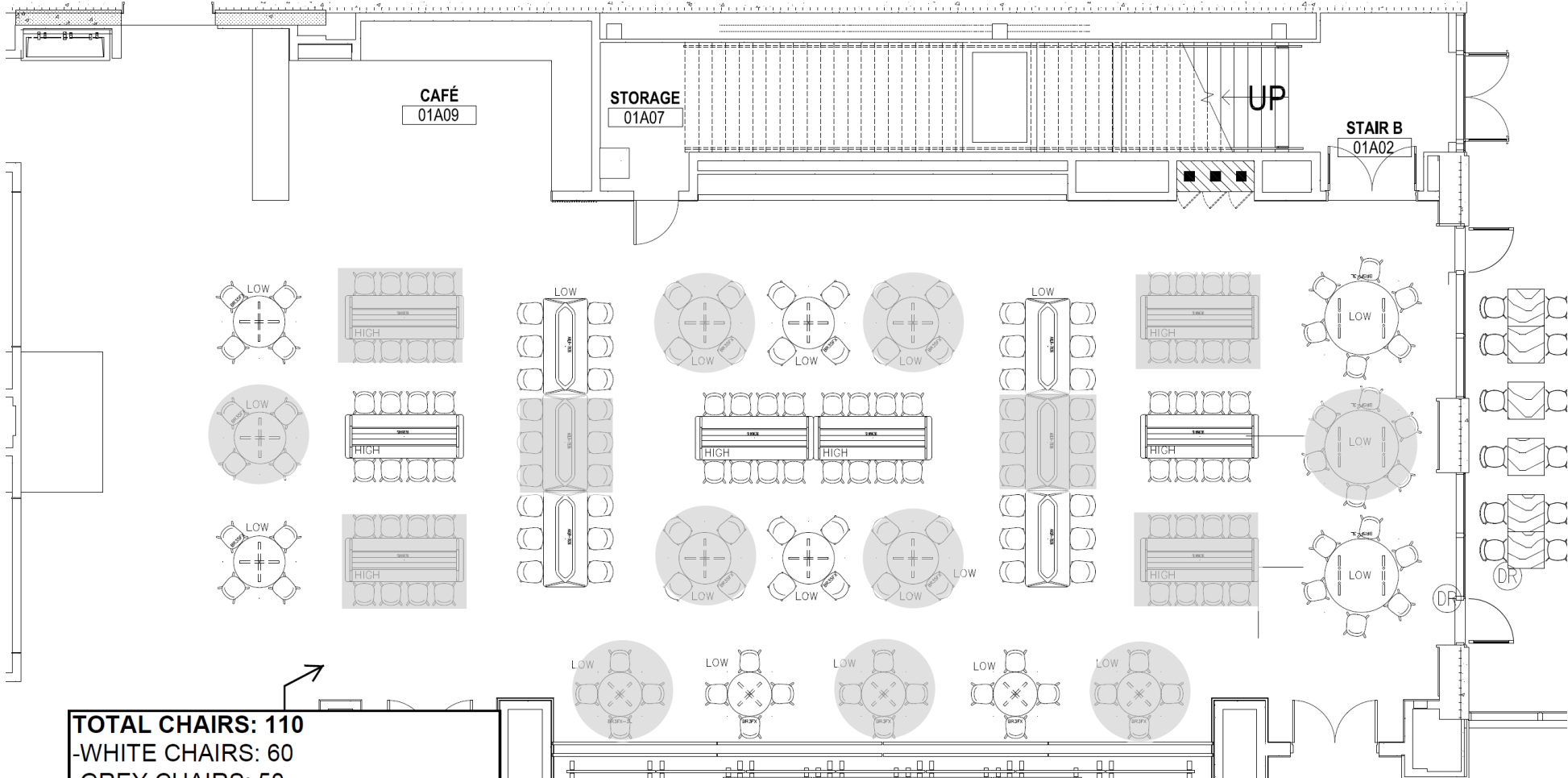


FRAME: STARLIGHT
SILVER METALLIC



SEAT PAD UPHOLSTERY:
PALLAS FRIEZE/HUBERT

CAFETERIA



TOTAL CHAIRS: 110
 -WHITE CHAIRS: 60
 -GREY CHAIRS: 50
TOTAL STOOLS: 64
 -WHITE STOOLS: 32
 -GREY STOOLS: 32
TOTAL SEATS: 174

CAFETERIA



TOTAL SEATS: 174

TOTAL STOOLS: 64

- TOTAL GREY STOOLS: 32
 - TOTAL WHITE STOOLS: 32
-

TOTAL CHAIRS: 110

- TOTAL GREY CHAIRS: 50
- TOTAL WHITE CHAIRS: 60

CAFETERIA



TOTAL SEATS: 174

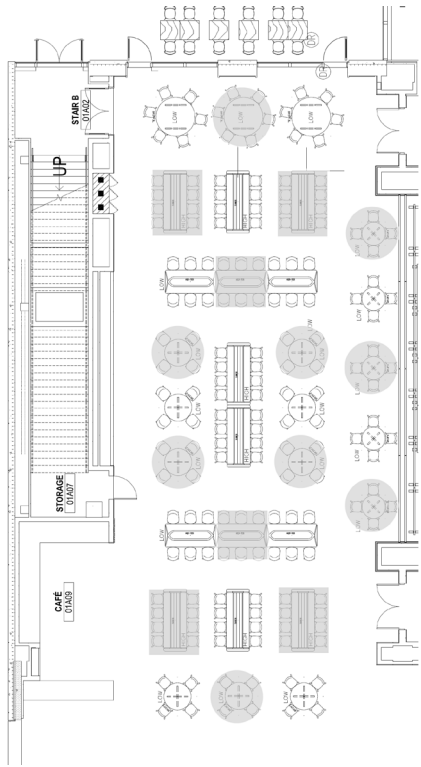
TOTAL STOOLS: 64

- TOTAL GREY STOOLS: 32
- TOTAL WHITE STOOLS: 32

TOTAL CHAIRS: 110

- TOTAL GREY CHAIRS: 50
- TOTAL WHITE CHAIRS: 60

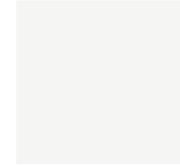
CAFETERIA



KIN STOOL
LOW BACK PLASTIC SEAT
WOOD LEGS
QTY: 64
FINISHES:
POLY: CRAYON GREY: 32
POLY: WHITE: 32
BASE: WOOD STAIN CLEAR ASH



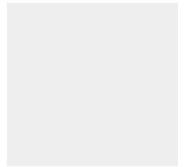
PLASTIC SEAT CRAYON GREY



PLASTIC SEAT WHITE



WOOD LEG STAIN:
CLEAR ASH



PLASTIC SEAT WHITE



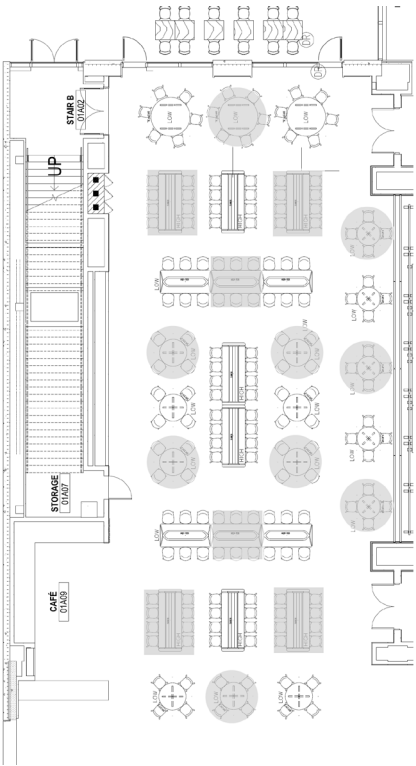
PLASTIC SEAT GREY



BASE: BEECHWOOD

EAMES KNOCK-OFF
MOLDED PLASTIC
QTY: 110
FINISHES:
POLY: GREY: 50
POLY: WHITE: 60
BASE: WOOD STAIN BEECHWOOD

CAFETERIA



AXYL DINING TABLE
 36"D x 78"W x 30"H (QTY. 6)
 FINISHES:
 TOP: WHITE LAMINATE
 EDGE: CLEAR MDF CORE
 BASE: PAINTED METAL TBD

LAMINATE: WHITE

METAL FRAME: WHITE

EDGE: CLEAR MDF CORE



SILTA BAR HEIGHT TABLE
 36"D x 96"W x 42"H (QTY. 8)
 FINISHES:
 TOP: WHITE LAMINATE
 EDGE: CLEAR/PLY CORE
 FRAME: WHITE
 WOOD LEGS: CLEAR ASH

LAMINATE: WHITE

EDGE: PLYWOOD CORE

FRAME: WHITE

WOOD LEG STAIN: CLEAR ASH



60"DIA x 29"H (QTY. 3)
 *T-LEG BASE DUE TO SIZE OF TABLE



PORTICO TABLES
 60"DIA x 29"H (QTY. 3)
 42"DIA x 29"H (QTY. 9)
 36"DIA x 29"H (QTY. 5)

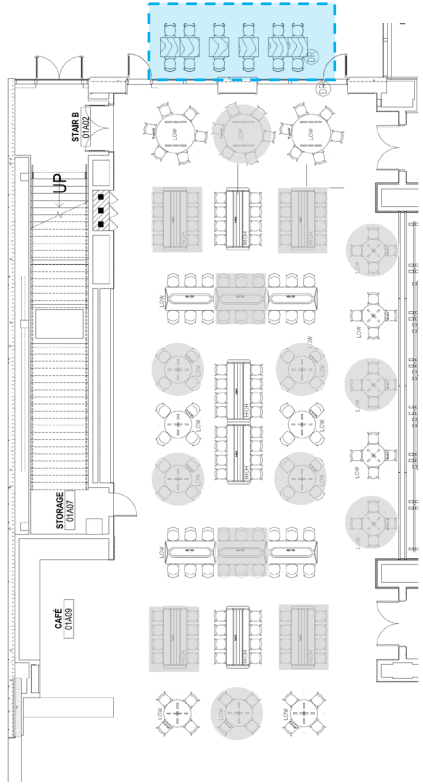
FINISHES:
 TOP: FROSTY WHITE LAMINATE
 EDGE: PVC WHITE
 BASE: COTTONWOOD

LAMINATE: FROSTY WHITE

BASE: COTTONWOOD WHITE

EDGE: WHITE

OUTDOOR DINING



CLASSIC ALUMINUM DINING TABLE

35.5"D x 35.5"W x 29.5"H

QTY: 6

COLOR: SLATE

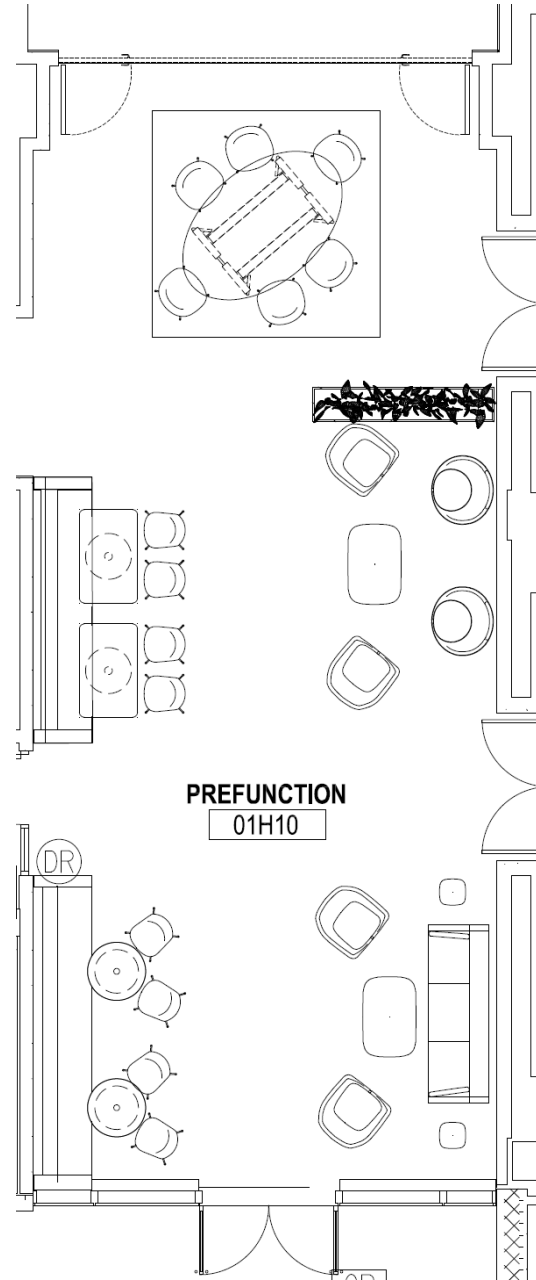


PACIFICA DINING ARM CHAIRS

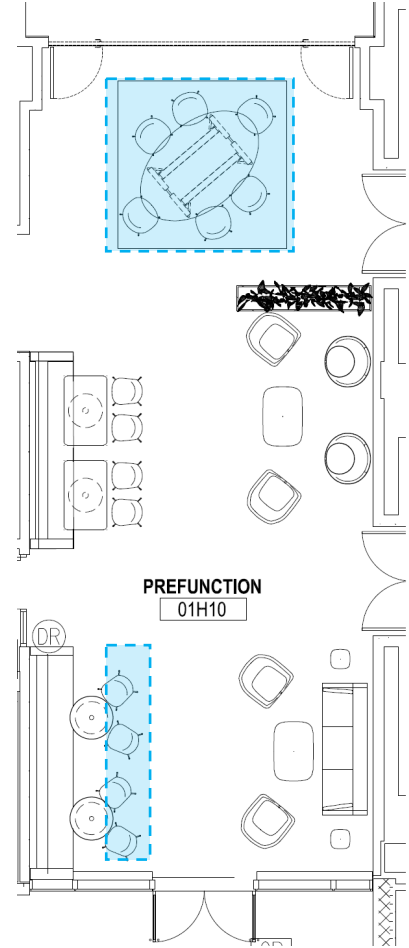
QTY: 12

COLOR: SLATE

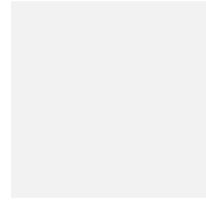
PREFUNCTION



PREFUNCTION



CZ ELLIPTICAL MEETING TABLE
KNIFE EDGE *NO POWER
60"D x 96"W
(QTY: 1)
FINISHES:
TOP: FROSTY WHITE
EDGE: BLACK PVC EDGE
BASE: WOOD STAIN TBD
METAL FRAME: COTTONWOOD WHITE



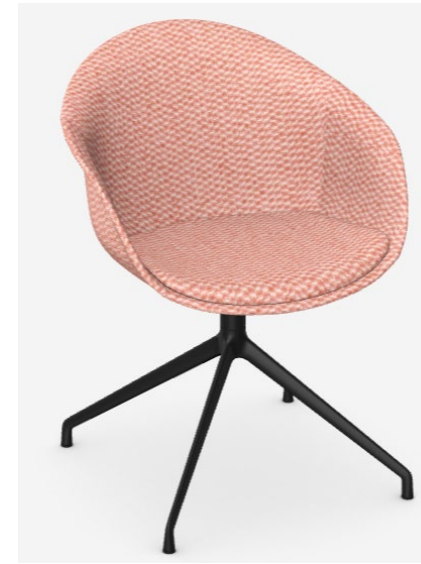
LAMINATE: TBD



EDGE: TBD

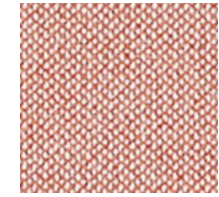


WOOD LEG STAIN: ECLYPSE
BLACK ON BEECH



KIN TUB CHAIR
FULLY UPHOLSTERED
4-STAR SWIVEL ON GLIDES

(QTY: 10)
FINISHES:
UPHOLSTERY: DESIGNTEX ROCKET/ROSE
QUARTZ
BASE/FRAME: BLACK

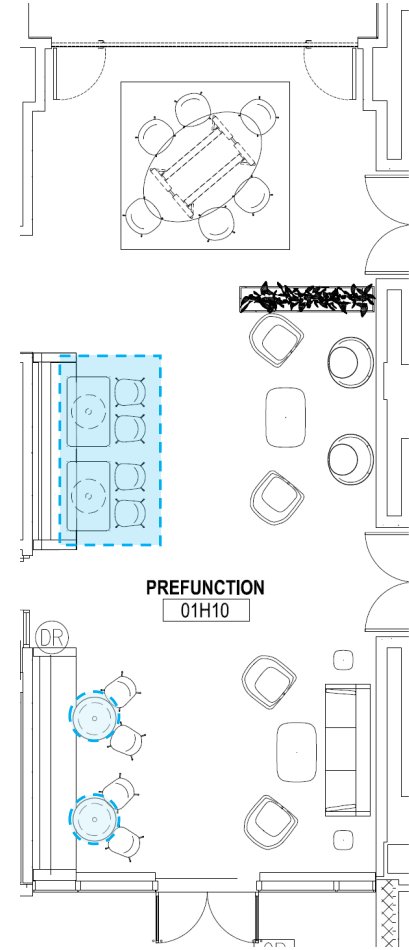


DESIGNTEX ROCKET/ROSE
QUARTZ



BASE: OFF BLACK
METAL

PREFUNCTION



ATHENS RECTANGULAR TABLE
***SQUARE EDGE**

30" D x 48" W (QTY. 2)

FINISHES:

TOP: FROSTY WHITE
LAMINATE

EDGE: BLACK PVC EDGE

BASE: COTTONWOOD WHITE



ATHENS ROUND TABLE

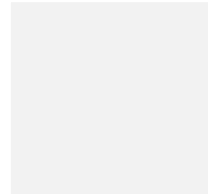
30" DIA (QTY. 2)

FINISHES:

TOP: FROSTY WHITE
LAMINATE

EDGE: BLACK PVC EDGE

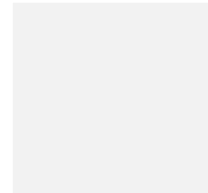
BASE: COTTONWOOD WHITE



LAMINATE: FROSTY WHITE



EDGE: BLACK



METAL BASE:
COTTONWOOD WHITE



DESIGNTEX ROCKET/GRAPHITE



BASE: BLACK

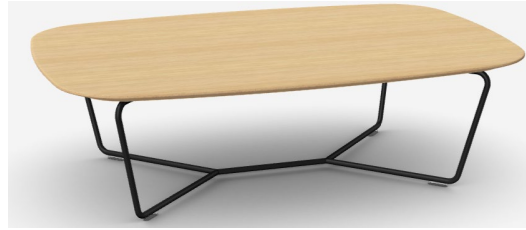
KIN SIDE CHAIR
FULLY UPHOLSTERED
4-STAR SWIVEL ON GLIDES
(QTY: 4)

FINISHES:

UPHOLSTERY: DESIGNTEX
ROCKET/GRAPHITE

BASE/FRAME: BLACK

PREFUNCTION



LAMINATE: FUSION
MAPLE



BASE: BLACK

CONIC COFFEE TABLE

12"H x 41"L x 28"W

(QTY. 2)

FINISHES:

TOP: FUSION MAPLE LAMINATE

BASE: BLACK



DESIGNTEX ROCKET/LINEN



BASE: BLACK

OPEN LOUNGE CHAIR

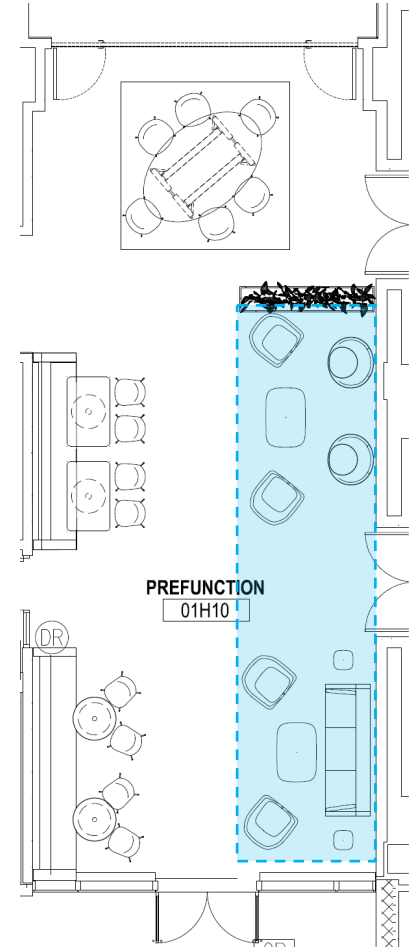
4-STAR SWIVEL ON GLIDES

QTY: 2

FINISHES:

UPHOLSTERY: DESIGNTEX ROCKET/LINEN

BASE/FRAME: BLACK



MAHARAM MESSENGER/ICE



BASE: BLACK

CONIC LOUNGE CHAIR W/ INTEGRAL HEADREST

WIREFRAME BASE

QTY. 2

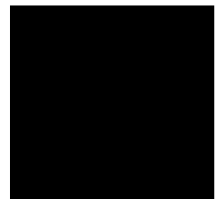
FINISHES:

UPHOLSTERY: MAHARAM:
MESSENGER/ICE

BASE/FRAME: BLACK



DESIGNTEX
ROCKET/NAVY



BASE: BLACK

FAMIGLIA LOUNGE CHAIR

4 LEG

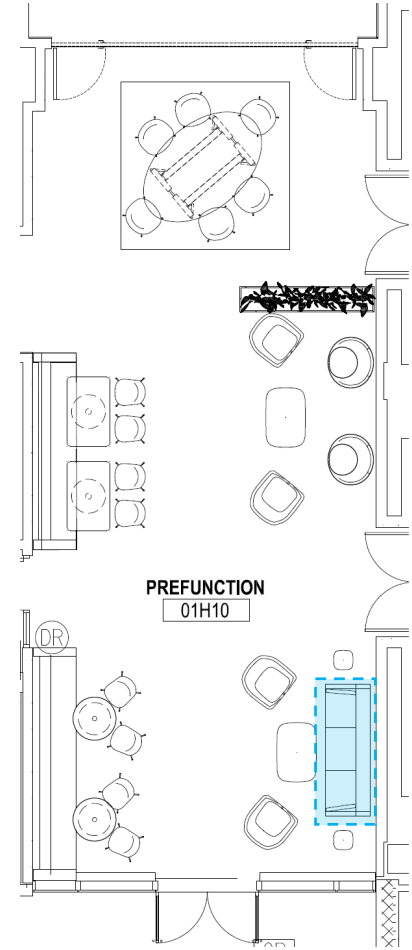
QTY: 2

FINISHES:

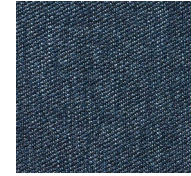
UPHOLSTERY: DESIGNTEX ROCKET NAVY

BASE/FRAME: BLACK

PREFUNCTION



ADAMS SOFA
84"W (QTY. 1)
FINISHES:
UPHOLSTERY: INDIGO
BASE: BLACK

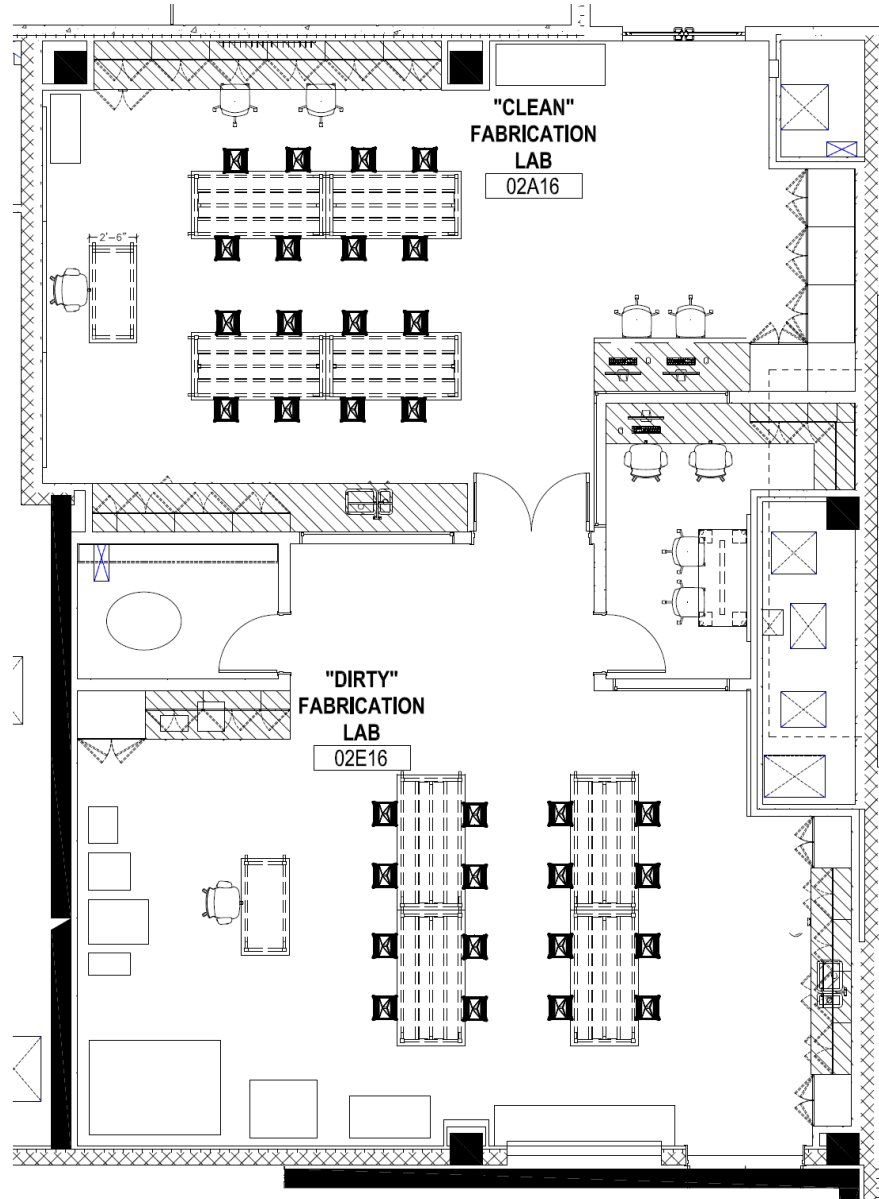


UPHOLSTERY: INDIGO



BASE: BLACK

FAB LABS



FAB LABS



PLACEHOLDER IMAGE

KEWAUNEE TABLES

42"D x 84"W x 36"H (QTY. 8)

30"D x 60"W x 36"H (QTY. 2) TEACHERS

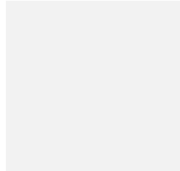
FINISHES:

TOP: KEMRESIN SLATE

BASE: WHITE



KEMRESIN: SLATE



METAL BASE: WHITE



METAL : SILVER

METAL STOOL

(QTY. 32)

HT. 24"

FINISH:

FINISH: SILVER

LAB PREP



POLY: BLUEGREY/
COOL GREY



BASE: BLACK

DONI POLY TASK CHAIR

QTY: 6

FINISHES:

POLY: BLUEGREY/COOLGREY

BASE: BLACK



LAMINATE:
FROSTY WHITE



METAL BASE: BLACK

PILLAR TABLE W/ CASTERS

30"D x 60"W x 29"H (QTY. 1)

FINISHES:

TOP: FROSTY WHITE LAMINATE

BASE: BLACK



OUSBY TASK CHAIR

QTY. 2

FINISHES:

MESH: GREY

COMPONENTS: BLACK POLY

UPHOLSTERY: KNOLL: JOURNEY CHIME



OUSBY TASK STOOL

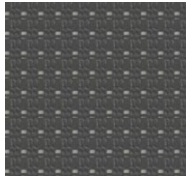
QTY. 2

FINISHES:

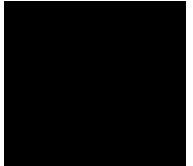
MESH: GREY

COMPONENTS: BLACK POLY

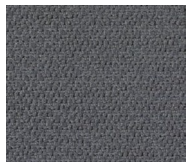
UPHOLSTERY: KNOLL: JOURNEY/CHIME



MESH: GREY

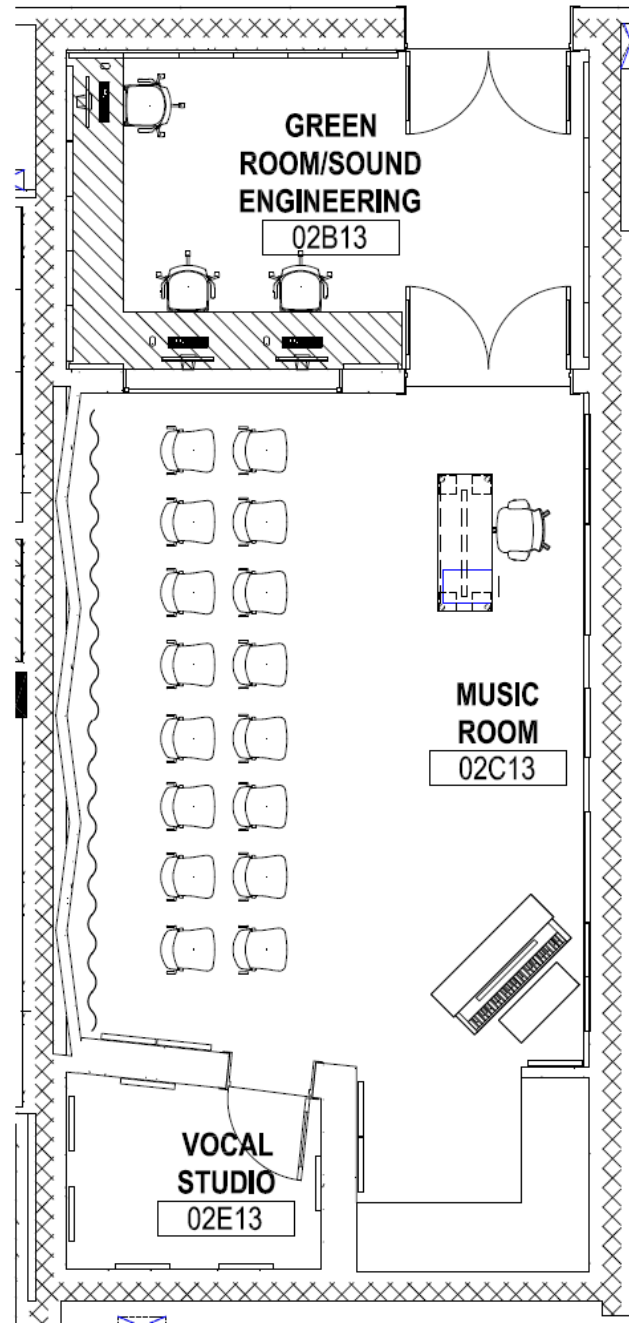


POLY: BLACK

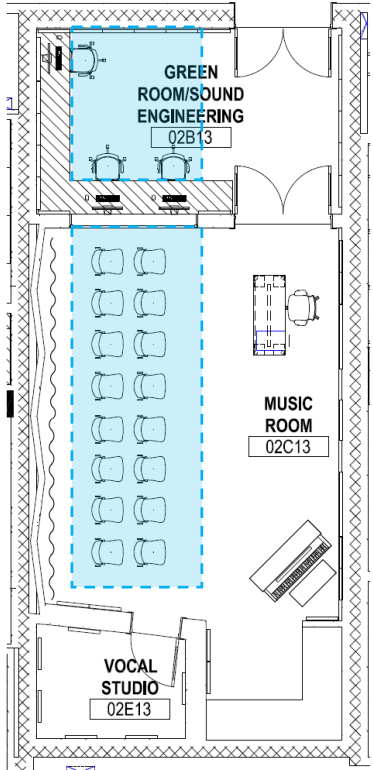


UPHOLSTERY: KNOLL:
JOURNEY/CHIME

MUSIC ROOM & SOUND ENGINEERING



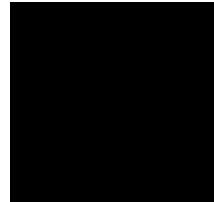
MUSIC ROOM & SOUND ENGINEERING



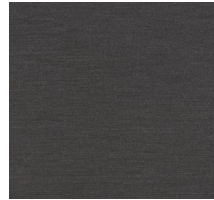
DONI POLY TASK CHAIR
ARMS, UPH. SEAT
QTY: 3
FINISHES:
SHELL: BLUEGREY/COOLGREY
UPH. SEAT: APHRODITE STORMCLOUD
BASE: BLACK



POLY: BLUEGREY
OUTSIDE/COOL GREY
INSIDE



BASE: BLACK



UPHOLSTERY:
APHRODITE/STORM
CLOUD



WENGER MUSIC CHAIR

QTY: 20 (CONFIRM)

FINISHES:

SHELL: BLACK POLY

BASE: BLACK



POLY: BLACK



BASE: BLACK

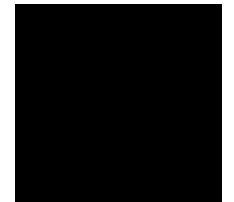


WENGER MUSIC STAND

QTY: 20 (CONFIRM)

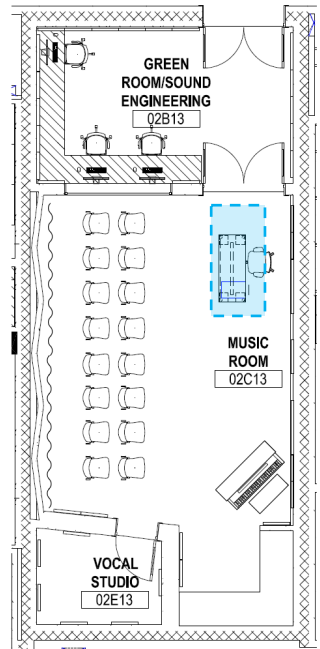
FINISH:

BLACK METAL



BLACK

MUSIC ROOM & SOUND ENGINEERING



OUSBY TASK CHAIR

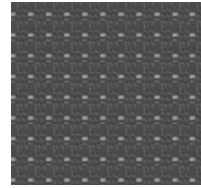
QTY. 1

FINISHES:

MESH: GREY

COMPONENTS: BLACK

UPHOLSTERY: KNOLL JOURNEY/JINGLE



MESH: GREY



POLY: BLACK



KNOLL JOURNEY/JINGLE



PILLAR TABLE DESK ON CASTERS

WITH FELT MODESTY

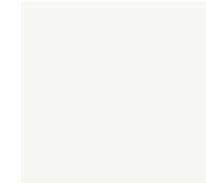
24" D x 60" W (QTY. 1)

FINISHES:

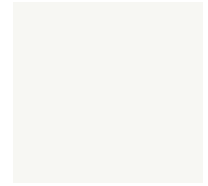
TOP: FROSTY WHITE LAMINATE

EDGE: PVC FROSTY WHITE

BASE: BLACK



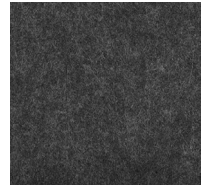
FROSTY WHITE
LAMINATE



FROSTY WHITE
PVC EDGE



BASE: BLACK



FELT: FLANNEL



CZ BOX/FILE MOBILE PED

QTY: 1

FINISHES:

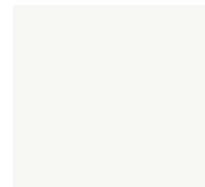
METAL: WHITE

DRAWER FRONTS: WHITE

SEAT: PALLAS FRIEZE HUDSON



METAL: BLACK

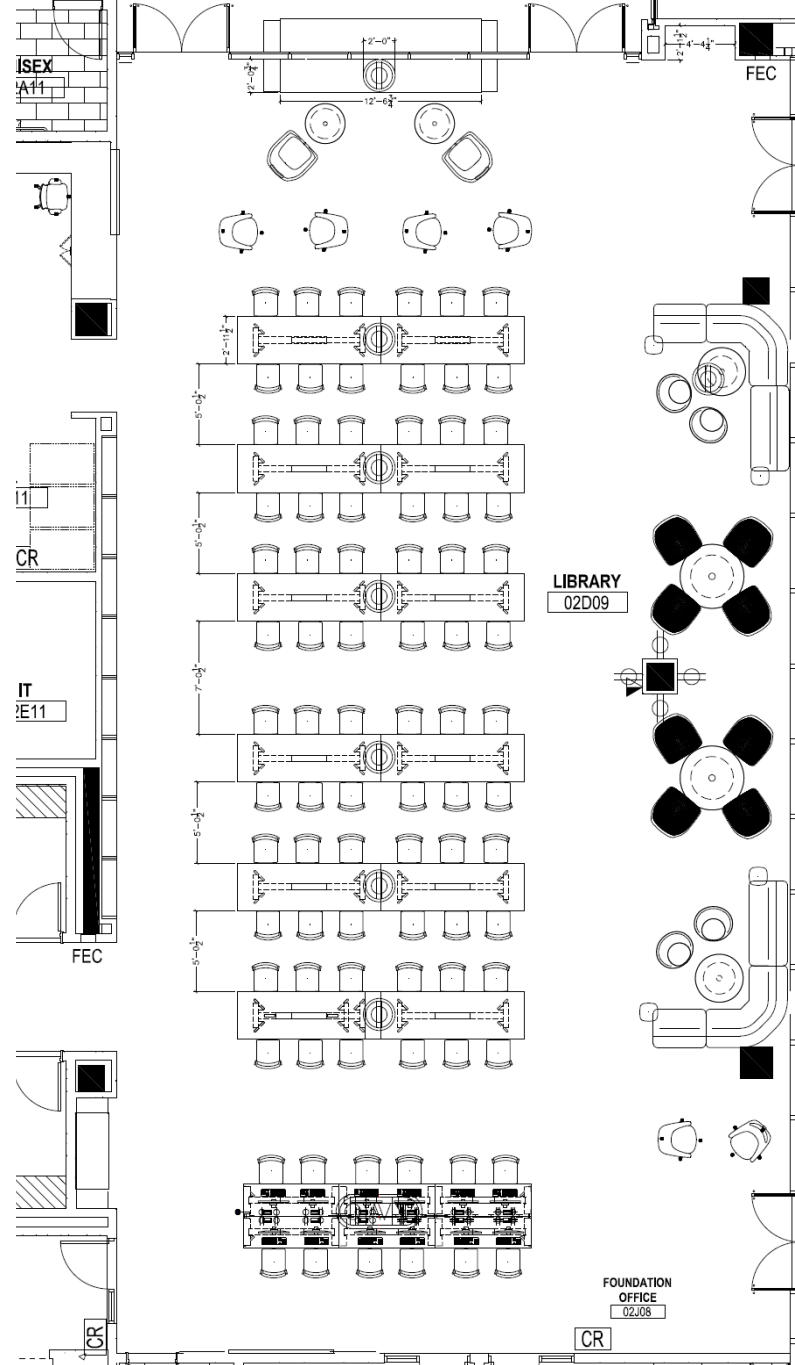


DRAWER FRONTS:
WHITE

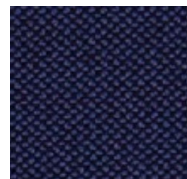


UPHOLSTERY: PALLAS
FRIEZE/HUDSON

LIBRARY



LIBRARY



DESIGNTEX
ROCKET/NAVY



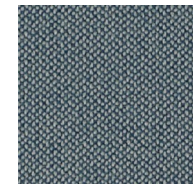
BASE: BLACK

**OPEN LOUNGE CHAIR WITH
HEADREST & WITHOUT
4-STAR SWIVEL ON GLIDES**

QTY: 2

FINISHES:

UPHOLSTERY: DESIGNTEX
ROCKET/NAVY
BASE: BLACK



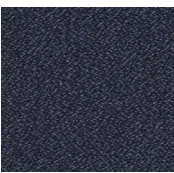
DESIGNTEX: ROCKET/CLOUD

FAMIGLIA LOUNGE CHAIR

QTY: 6

FINISHES:

UPHOLSTERY: DESIGNTEX
ROCKET/CLOUD
BASE: BLACK



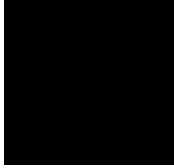
MAHARAM
MILESTONE
/CHARCOAL

MOTE MODULAR LOUNGE

QTY: 2

FINISHES:

UPHOLSTERY: MAHARAM
MILESTONE/CHARCOAL
BASE/FRAME: BLACK



BASE: BLACK



UPHOLSTERY:
MAHARAM
MODE/SYCAMORE



BASE: BLACK

**CONIC LOUNGE CHAIR W/ INTEGRAL
HEADREST**

WIREFRAME BASE

QTY. 4

FINISHES:

UPHOLSTERY: MAHARAM
MODE/SYCAMORE
BASE/FRAME: BLACK



DESIGNTEX: ROCKET/GRAPHITE



BASE: BLACK

FAMIGLIA LOUNGE

QTY: 8

FINISHES:

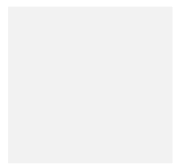
UPHOLSTERY: DESIGNTEX:
ROCKET/GRAPHITE
BASE/FRAME: BLACK



LAMINATE: WHITE



EDGE: BLACK



METAL BASE: WHITE

ATHENS ROUND TABLE

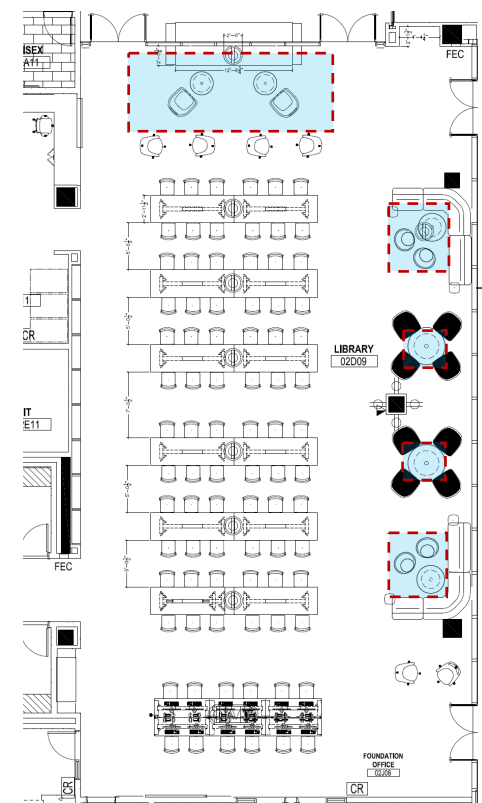
30" DIA x 29" H (QTY. 2)

36" DIA x 18" H (QTY. 2)

48" DIA x 29" H (QTY. 2)

FINISHES:

TOP: LAMINATE FROSTY WHITE
EDGE: BLACK
BASE: COTTONWOOD WHITE



LIBRARY



CZ WOOD TABLES

KNIFE EDGE

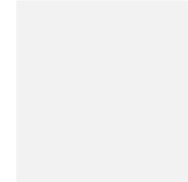
36"D x 108"W (QTY. 12)
DEAN INSURFACE POWER

FINISHES:

TOP: RIVER CHERRY
BASE: RIVER CHERRY
METAL FRAME UNDER SURFACE:
MISTY BROWN
MODULE COLOR: WARM GREY



RIVER CHERRY TOP AND LEGS



METAL BEAM UNDERNEATH TABLE: FROSTY WHITE

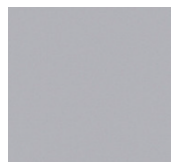


OPT 4 MESH BACK STACK CHAIR, UPH. SEAT

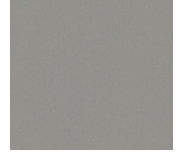
QTY. 72

FINISHES:

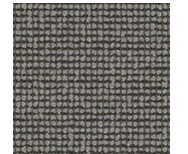
POLY/MESH: STONE GREY
FRAME: STARLIGHT SILVER METALLIC
UPHOLSTERY: PALLAS FRIEZE/HUBERT



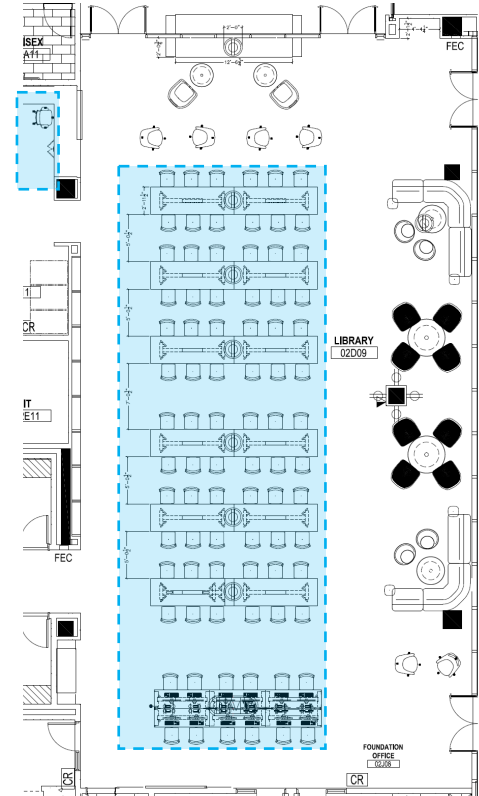
STONE GREY-POLY/MESH BACK



LEGS: STARLIGHT SILVER-METALLIC



SEAT PAD UPHOLSTERY: PALLAS FRIEZE/HUBERT



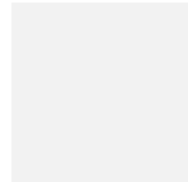
CZ BENCHING

KNIFE EDGE *HARDWIRED INTO BU

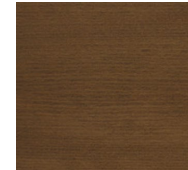
24"D x 72"W (3 CONNECTED)

FINISHES:

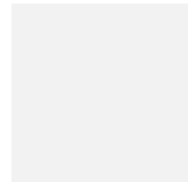
TOP: FROSTY WHITE
EDGE: FROSTY WHITE
BASE: RIVER CHERRY
FRAME: COTTONWOOD
GROMMET COLOR: COTTONWOOD



LAMINATE: FROSTY WHITE



BASE: RIVER CHERRY



METAL BEAM UNDERNEATH TABLE: COTTONWOOD WHITE



OUSBY TASK CHAIR

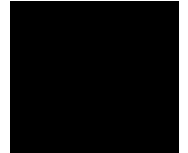
QTY. 13

FINISHES:

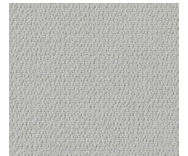
MESH: GREY
COMPONENTS: BLACK POLY
UPHOLSTERY: KNOLL: JOURNEY/JINGLE



MESH: GREY



POLY: BLACK



KNOLL JOURNEY/JINGLE

FOR ACCURACY OF COLOR/TEXTURE/FINISH PLEASE REFER TO PHYSICAL SAMPLES